

INNOVATION

ATION

The Cleveland Foundation: At a Glance

MISSION

To enhance the lives of all residents of Greater Cleveland, now and for generations to come, by building community endowment, addressing needs through grantmaking, and providing leadership on key community issues.

HISTORY

Established in 1914, the Cleveland Foundation is the world's first community foundation, the vision of Cleveland banker and lawyer Frederick H. Goff. He wanted to pool the charitable resources of Cleveland's philanthropists into a single, great, and permanent endowment for the betterment of current and future residents. His revolutionary idea has grown into an organization that has benefited millions of lives for 97 years and forever reshaped the way community members come together to care for one another. Today, the Cleveland Foundation is the second-largest community foundation in America in terms of assets.

WHAT IS A COMMUNITY FOUNDATION?

A community foundation is a charitable organization created by and for a community of

people. Local donors support it. A board of private citizens governs it, working for the community's greater good. Funds come from a variety of sources, including bequests and living trusts, and are invested in perpetuity. The earnings on investments are then distributed to worthy organizations or causes. Today, more than 1,000 community foundations exist around the world.

STEWARDSHIP

We are the stewards of donor dollars, protecting and growing assets and ensuring that the wishes of our donors are met. Our board and our investment advisors guide a diversified investment strategy.

GRANTMAKING

We are Greater Cleveland's and Ohio's largest grantmaking organization. The foundation awards most grants to registered nonprofit organizations that support projects and programs that benefit Greater Cleveland's citizens, meet community needs, and test new ideas. We annually award about 3,000 grants, ranging from a few hundred dollars to several million dollars. Some two-thirds of our discretionary dollars are directed to areas

identified as the community's greatest needs: economic transformation, public education reform, youth development, neighborhood revitalization, and arts advancement.

PHILANTHROPY

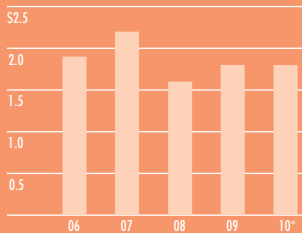
The foundation exists because of the extraordinary generosity and vision of our donors. We offer many creative and rewarding ways to give back to the community, some with significant tax advantages. The foundation consists of more than 1,300 funds established by individuals, families, organizations, and corporations. We are the center for charitable investment in the Greater Cleveland community.

LEADERSHIP AND PARTNERSHIP

The foundation leverages its resources and magnifies its impact on important causes in the community by working in partnership with many organizations. We focus our attention and efforts on vital issues and often serve as collaborator and convener as well as grantmaker.

Endowment

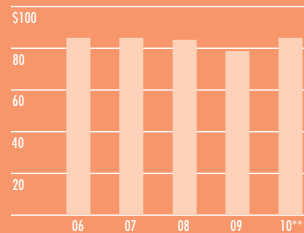
Total Assets (dollars in billions)



Our diversified investments and the recovering financial markets helped foundation assets grow.

Grantmaking

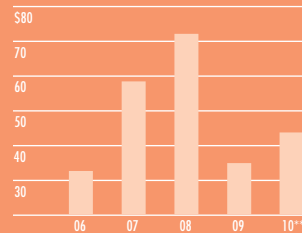
Total Grants (dollars in millions)



The market plunge of 2008 weighed on grantmaking, which is tied to the size of the foundation's endowment.

New Gifts Received

Total Gifts (dollars in millions)



Greater Clevelanders continued to show their characteristic generosity.

Contents

- 2 CEO and Chairman's Letter
- 6 CEO Perspective
- VITAL ISSUES
- 8 Economic Development
- 12 Education
- 16 Neighborhoods
- 20 Human Services
- 24 Arts and Culture
- 28 Grantmaking Highlights
- 30 New Gifts
- 34 Donor Societies and Funds
- 38 Financial Summary
- 39 External Advisors and Banks
- 40 Board of Directors and Staff

* As of Sept. 30, 2010, unaudited
**Year-end 2010, unaudited

We live in an age when innovation is ubiquitous, and yet more desperately needed than ever to revitalize our region and nation.

Innovation extends and enriches our lives, puts prosperity within reach of more people, and gives us more information and ways to communicate it than ever before imagined. Still, many societal ills remain, and some are worsening.

So we need *real* innovation – technological, economic, and social. We must develop new ways of educating, creating jobs and wealth, and solving problems we have only begun to comprehend. And we must work together toward it.

COLLABORATION

Dear Friends

Cleveland has long had an image as a manufacturing colossus, a city of strong backs and even stronger machines. Yet in Cleveland's golden age of the late 1880s through the first half of the 20th century, our city's mightiest assets were its strong minds – its innovators. Cleveland blossomed as an industrial powerhouse only after it bloomed as an ingenuity blockbuster. Invention, entrepreneurship, and vision converged to create a marvelous metropolis – that era's equal to today's Silicon Valley. Now, innovation is on a comeback here.



Board Chairman David Goldberg (left) and
President & CEO Ronald Richard

Brilliant minds and bright ideas are lighting up our world-class hospitals, our premier universities, and our up-and-coming companies.

Greater Cleveland is again emerging as a leader in fast-growing industries for a rising century – biomedicine, advanced energy, flexible electronics, and polymers, to name a few. The Cleveland

Foundation is proud to help catalyze this innovation. Through leadership, collaboration, and grantmaking, we are pioneering new ways for philanthropy to spark inclusive economic growth.

We do so in part because we believe that helping to restore health to our economy by creating jobs through business and technology innovation is the single most important way to boost all of the other areas of our grantmaking: education reform, neighborhood revitalization, youth development, and arts advancement.

REBOUNDED FROM RECESSION

The generosity of donors from all walks of life enables this foundation to play a prominent role in helping the region. We are pleased to report that the permanent endowment that generations of benefactors have entrusted to the Cleveland Foundation is healthy.

The foundation's endowment continued to recover from the historic market downturn that began in late 2007 and drove our total assets from \$2.2 billion down to \$1.6 billion. Careful management by the foundation's Investment Committee, professional advisors, staff, and our trust banks produced a 22 percent investment return in 2009. That performance, and \$36 million in new gifts, boosted our portfolio by about \$200 million to reach \$1.8 billion by year-end 2009. Our investment growth through the first nine months of 2010 added another \$45 million.

KEEPING OUR WORD

As a result, we were able to provide about \$164 million in grants to the community in 2009 and 2010 amid still-challenging times. We pledged to help our local nonprofit organizations hit hard by the economic downturn. We made good on that promise. In 2009, our grant total fell by less than 6 percent in a year when the average U.S. community foundation cut grantmaking by almost 10 percent – the biggest average drop in at least 16 years. Then, in 2010, our grantmaking rose significantly, from \$79 million to about \$85 million, largely due to the generosity of our donors through their donor-advised funds.

Our founder, Frederick Harris Goff, envisioned this kind of stewardship when he created the country's first community foundation – the Cleveland Foundation – 97 years ago. At that time, the city teemed with inventors pioneering new technologies in electricity, chemicals, metals, paints, and machining.

Goff invented something equally profound: a perpetual grant-making machine flexible enough to address the needs and seize the opportunities of any era.

Today, the Cleveland Foundation retains its innovative spirit and its place at philanthropy's cutting edge.

THINKING GREEN

A prime example of philanthropic innovation is our leading role in creating a series of what we call Evergreen Cooperative companies. These companies are the product of collaboration among the foundation, City Hall, and several key foundation partners – Case Western Reserve University, the Cleveland Clinic, and University Hospitals.

These “anchor institutions” in University Circle helped us to create the new cooperative companies, which are helping low-income citizens obtain employment – and indeed become owners in their companies. The anchors are redirecting a portion of their combined \$3 billion in annual procurement spending to buy local goods and services from these new enterprises.

We are pleased to report that the permanent endowment that generations of benefactors have entrusted to the Cleveland Foundation is healthy.

COMMUNICATION

To create jobs in Cleveland, the foundation is even looking abroad. Our experts are cooperating with Team NEO and other partners to lure foreign businesses here and open foreign markets to Cleveland's exporters.

From its inception in 2006 through December 2010, Team NEO can claim credit for 41 new company expansions or relocations, 3,500 new jobs, and \$135 million in annual payroll in Greater Cleveland. The foundation provided Team NEO more than \$1.5 million in 2009 and 2010. Our contributions allowed Team NEO to hire an international-business-development specialist and target firms whose products and services complement emerging industries here, including advanced energy and medical devices.

R&D LEADS TO BUSINESS STARTUPS

We're promoting research and development in those fields and in biotechnology, as our city's bioscience institutions and companies continue to evolve into a global industry cluster. Cutting-edge R&D helps to save lives and treat illness, and it can also help save Cleveland by creating spinoff businesses. So we're propagating it through grantmaking.

We provided \$1.5 million in 2009 to Case Western Reserve University's Center for Proteomics and Bioinformatics, where scientists manipulate proteins to treat and cure disease – and, we hope, eventually create startup companies. Our \$5 million grant in 2005 launched that center and put Cleveland at the forefront of a booming field that garnered \$375 million in federal research grants in 2009.

We've also supported the Cleveland Health Tech Corridor, a burgeoning biotech belt stretching from Case's campus to Cleveland State University's. The area already includes more than 75 biomedical companies, seven business incubators, and 45 other young tech firms. Among the corridor's crown jewels is the \$250 million Global Cardiovascular Innovation Center, a Cleveland Clinic-led collaboration to speed the commercialization of cardiovascular products.

GRANTMAKING AT THE GRASS ROOTS

The Cleveland Foundation is also bringing innovation to Cleveland's neighborhoods.

Our affiliate program, Neighborhood Connections, is turning good ideas of neighborhood citizens into realities, with small grants, mentoring, peer networking, and leadership training.

Another grantee, Neighborhood Progress Inc., is using a \$4.5 million grant to fight foreclosures, support redevelopment, and re-imagine the sustainability of urban neighborhoods.

INSPIRATION WITH ECONOMIC BENEFITS

We also established NewBridge, an after-school education center for teens and a job-training center for adults. NewBridge is a replication of Pittsburgh's highly successful Manchester Bidwell training center, which has proved over several decades that a bright and stimulating environment staffed by caring educators can inspire students to become world-class citizens. Our \$3 million grant helped NewBridge open an airy, inviting, and high-tech building in Midtown in 2010.

Innovation isn't just a matter of coming up with new ideas. Innovation takes execution.

NewBridge offers programs for teens at risk of quitting school, and provides medical-career training for adults. Dedicated mentors use ceramics, digital arts, and other media to engage teens and inspire their innate love for learning. The curriculum for adults is designed with Cleveland's leading medical institutions. Those hospitals are eager to hire NewBridge graduates into secure jobs as phlebotomists and pharmacy technicians, with pay and benefits averaging \$32,000 per year.

We're inspiring innovation in the arts too, especially on the business side. Cleveland's arts and cultural organizations have long been civic jewels, but even our proudest must innovate to survive and thrive. So our Sustaining Excellence program is spurring and supporting them, with \$1.4 million in 2010, as they experiment with new ways of operating.

We're also bringing new art to our region through Creative Fusion, our international artist-in-residence program. Creative Fusion brings prominent foreign visual artists, performers, poets, and playwrights to Greater Cleveland to build relationships with our universities, young audiences, and local artists. Through it, we hope to diversify our historically Euro-centric arts scene and establish Cleveland as a globally welcoming arts center.

Those neighborhoods can only be as strong as their people. So the foundation granted more than \$3.2 million in 2009 and 2010 to the foundation-led MyCom collaborative. MyCom – My Commitment, My Community – is a joint venture with Cuyahoga County, the city of Cleveland, and other funders to provide underserved city youths with the kinds of life-enriching, responsibility-building experiences that middle-class children take for granted: summer jobs, out-of-school enrichment activities, and caring adult mentors.

Today, the Cleveland Foundation retains its innovative spirit and its place at philanthropy's cutting edge.

In education, we're investing millions of dollars and rallying support for what may be Cleveland's last, best chance to save its public-school system. We elaborate elsewhere in this report on our bedrock belief that education reform in Cleveland is inextricably intertwined with our region's capacity to innovate and thrive. Northeast Ohio will lose more generations of leaders and builders if Cleveland's schools continue to fail our children. So we are resolved to bring innovation and change to the Cleveland Metropolitan School District.

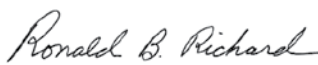
THE PEOPLE BEHIND THE PEOPLE'S FOUNDATION

Of course, innovation isn't just a matter of coming up with new ideas. Innovation takes execution. Our staff excels at both. We're proud of every one of our dedicated and talented employees. And we're especially proud that the Council on Foundations named Executive Vice President Robert E. Eckardt as its 2010 Distinguished Grantmaker – the national philanthropy field's highest individual honor.

Sadly, we lost one of our history's bright lights in 2010: James A. "Dolph" Norton, who led the foundation from 1967 to 1973. Dolph upheld the highest ideals of public service and helped to create the modern community foundation. We are honored by his legacy.

Finally, we wish to thank this community. Your generosity, forward thinking, and confidence in your community foundation continue to inspire and challenge us.

As we go forward through 2011 and beyond, we will strive to earn that community trust every day.



Ronald B. Richard
PRESIDENT & CEO



David Goldberg
CHAIRMAN OF THE BOARD

JANUARY 2011

COMMUNIC
ATION

Education Leads to Innovation

By Ronald B. Richard, President & CEO

For many generations, educational opportunities have been the pathway to the American dream. And the reality in today's economy is that without a high-school diploma and post-secondary education, career options are limited, and often bleak. Untapped human potential abounds as a result of

our current system; the future of our country depends on education. However, not only does our education system need to become higher quality and more productive, it also needs to change in structure. Let me state from the outset my



strongly held view that fixing America's failing public school systems is the single most important mission of our nation – and of our city. And, for the Cleveland Foundation, it is our No. 1 priority. Four years ago, we set out on a quest with the leaders of Cleveland schools and many other partners

to transform our schools. Together we have created a portfolio of 11 new high-performing schools, which have more autonomy and flexibility than regular public schools, thanks to an agreement with the Cleveland Teachers Union.

We call them “opportunity schools,” and our goal was to show what our kids could do in an environment of high expectations, excellent pedagogy, and rigor. Not surprisingly, these innovative schools far outperform their district peers and rank alongside suburban counterparts.

Exhibit A is the Cleveland School of Science and Medicine, which holds Ohio’s top school rating. Every member of the Class of 2010 graduated *and* earned acceptance to a four-year college. Alumni now attend universities such as Princeton, Bowdoin, Case Western Reserve, Cleveland State, Xavier, Ohio State, and Miami of Ohio.

Yet model schools are just starting points. Innovation’s power must come to *every* Cleveland school, educator, parent, and student. However, true reform and genuine transformation can be messy. It will be neither quick nor easy – especially now, when resources are scarce.

We spent many months and many dollars finding bright spots of success in schools nationwide. Those findings became the basis of the Cleveland Metropolitan School District’s historic Academic Transformation Plan.

Among the five-year goals: Boost the graduation rate from 54 percent to 90 percent; produce college- and job-ready graduates; attain passing grades on the state report card for *every* school, with at least half earning the equivalent of a B or an A.

One point of insistence: Devoted principals must have authority to select their teachers. Conclusive evidence demonstrates that students can surmount great obstacles when encouraged by great teachers who believe in and challenge them. Teacher assignments and rewards must hinge on training, ability, and achievement – not seniority. Yet seniority prevails under Ohio’s current laws. Principals also need flexibility to adopt creative curricula, longer school days, and longer school years.

Educational innovator Geoffrey Canada, founder of the renowned Harlem Children’s Zone, compares the state of urban public education to Hurricane Katrina: “We’ve got a bunch of people standing on roofs, convinced that help is on the way,” he laments, “and no one is coming.”

It’s time for help to come. We’ve been waiting for decades to improve our public schools, and it’s well past time to link arms with our partners until we reach those who are stranded.

Without major public-school reform, Cleveland cannot remain globally competitive, our city will be left behind, and our children will face a bleak future – a tragic prospect wholly unnecessary. We must seize this chance to create a stronger, more globally competitive Cleveland, and a more just society for our community and the nation.

The time is now. We can’t wait.

INSPIRATION



Economic Development

The images of the disastrous Deepwater Horizon oil spill in the Gulf of Mexico will remain with us for a lifetime: oil-soaked pelicans, gooey shores, and a seemingly unstoppable flow of petroleum spewing from the ocean floor. The conclusion those images underscore is inescapable: The time has come for our world to innovate its way out of our unsustainable dependence on fossil fuels. At the Cleveland Foundation, we believe Northeast Ohio is ready to help pave the way. With our leadership, partnership-building, and grantmaking as catalysts, this region is moving ahead as a pioneer in the research, development, and manufacture of new advanced-energy technologies. Greater Cleveland's growing concentration of expertise and resources could allow us to make major contributions toward abating the energy and climate crises, while boosting our own economy.

TRANSFORM
ATION

INNOVATION

Enabling our entrepreneurs, reinventing our economy

When entrepreneur Ray Leach founded JumpStart about seven years ago to help startup businesses succeed, Northeast Ohio's entrepreneurial landscape "was basically scorched earth," he recalls.

Nascent businesses with high growth potential were scarce. The flow of patents had slowed to a trickle. Venture capitalists barely bothered looking for prospects in Cleveland. Economic development was too focused on slim chances of attracting new companies.

"There was nothing going on to foster broad-based understanding of the importance of innovation to economic growth," remembers Leach, whose nonprofit coaches entrepreneurs and helps them find financing.

Since then, Leach says, the Cleveland Foundation's leadership and financial capital have helped a growing number of

complementary economic-development organizations spring to life across the region. These new entities — JumpStart, BioEnterprise, NorTech, and more — have a new game plan: grow companies and jobs indigenously.



They collaborate daily with each other and with 23 colleges and universities across the region to "cultivate this scorched earth into a garden of innovation, if not a forest," Leach says.

"The collaborations the foundation has built over the last six or seven years in re-creating the innovation ecosystem have been nothing short of incredible,"

he marvels. "The Cleveland Foundation is becoming known around the country for its leadership around transformative ideas that can grow an economy. In foundation and economic-development circles, Cleveland and Northeast Ohio are recognized nationally as a community that gets it."

COLLABORATION

WIND MAKES CLEVELAND COOL

The winds of change are blowing across Northeast Ohio.

With luck and hard work, by 2012, those winds will be spinning five wind-power turbines rising out of Lake Erie off of Cleveland—set to be the world's first freshwater wind farm. Those skyscraper-tall turbines could power thousands of homes. More importantly, they could help power Cleveland's economy and generate jobs. They're already generating hope.

The Cleveland Foundation has made a priority of building a 21st-century advanced-energy industry here. Now, we and many corporate and government-sector partners appear to be moving the needle.

In 2010, our \$700,000 grant to the regional economic-development nonprofit NorTech helped it launch the Lake Erie Energy Development Corp., or LEEDCo. In turn, LEEDCo executed a deal with GE, Bechtel, and other partners to develop this new freshwater wind farm.

The project will be a proving ground for new wind-power technologies, particularly in the offshore niche. Northeast Ohio is well suited to develop, manufacture, and service those machines, thanks to abundant expertise in engineering, composites, and hydraulic technologies. We envision the region becoming a global leader in a booming industry that already accounts for \$46 billion in revenues and 400,000 jobs worldwide.

Wind power is just one innovative opportunity that the Cleveland Foundation is helping to cultivate on the region's horizon.

INCUBATING INVESTMENTS AND JOBS

With the foundation's support, NorTech is also helping to build other robust tech industries here, including flexible electronics—the bendable, energy-efficient computer screens of the future being developed here today.

Bioscience has emerged as another cluster of expertise that we're proud to nurture. BioEnterprise, the business-growing partnership in University Circle, is drawing acclaim as a new way to commercialize biomedical research and launch young companies. Our grants, including \$800,000 in 2010, help BioEnterprise connect health-care startups to investors, expertise, and research. The nonprofit has helped create or recruit 100 companies to Northeast Ohio, and has attracted more than \$1 billion in investment capital.

JumpStart is another national model. Today, about two of every three new jobs are at firms younger than five years old. JumpStart is a nonprofit that helps entrepreneurs create jobs by providing their startup firms with money, mentors, and financing connections. One example of JumpStart's leveraging power is its \$550,000 investment into an infection-fighting company called Great Lakes Pharmaceuticals. This investment paved the way for almost \$4 million in private capital.

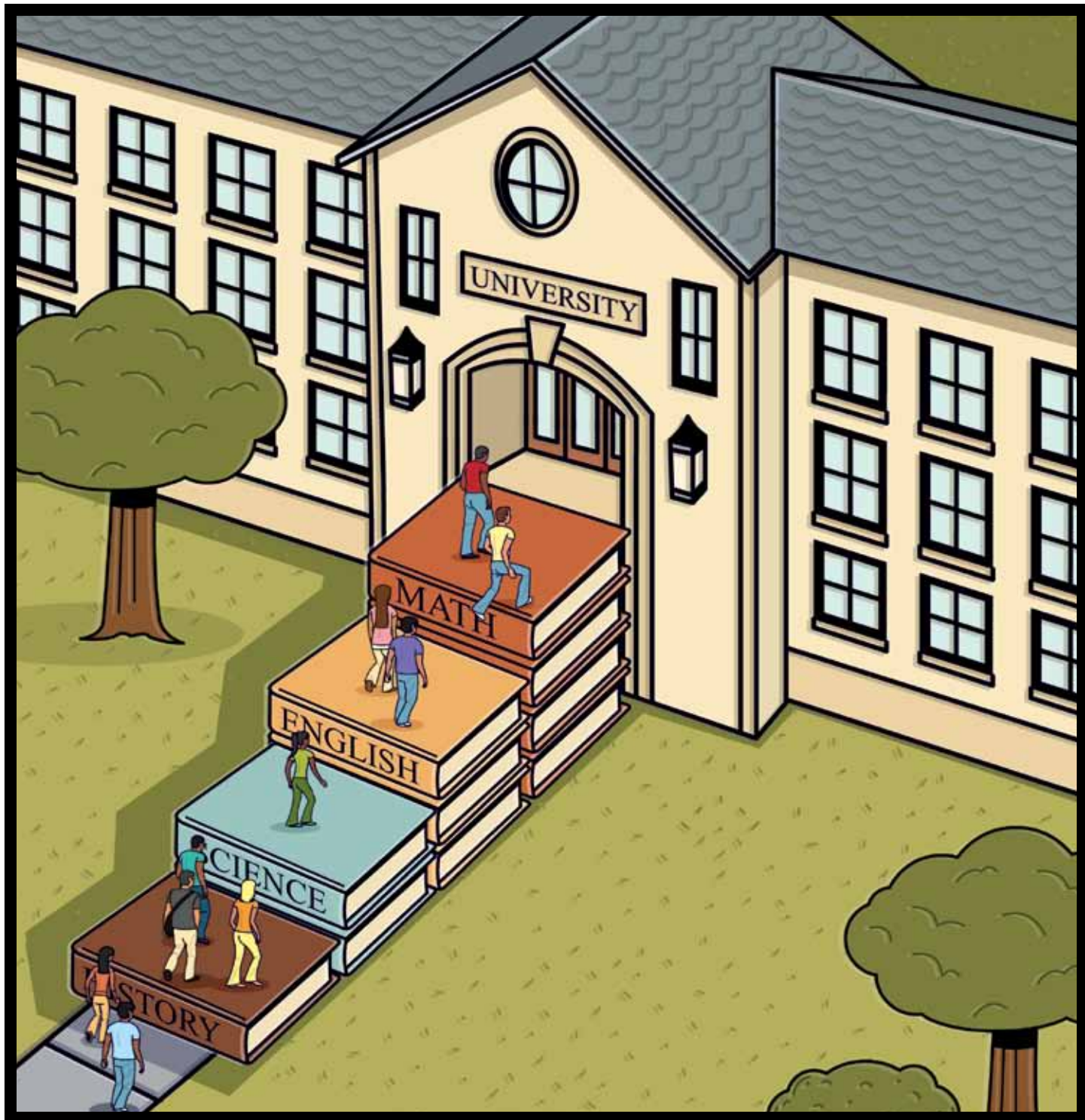
We have \$2 million in JumpStart's venture-capital fund, and we granted \$750,000 in June 2010 for its operations. Others share our faith: An independent study in 2009 valued JumpStart's annual economic impact at \$90 million.

The foundation also is committed to building minority-owned businesses. We awarded \$250,000 to the Greater Cleveland Partnership's Commission on Economic Inclusion for the Minority Business Accelerator 2.5+ initiative to grow the region's largest minority business enterprises. Another grant of \$150,000 will help the commission provide growth capital to minority-owned companies.

Learn more at www.ClevelandFoundation.org/Economy



TRANSFORM ATTENTION



Education

The hunger for knowledge is a paradox: The more we satisfy it, the greater the hunger grows. The more we neglect it, the more the hunger fades away. At the Cleveland Foundation, nothing outweighs our commitment to nurture that hunger in children by supporting education reform. Nowhere is the need for innovation greater. We have invested millions into creating innovative “opportunity schools” in the Cleveland Metropolitan School District to test and showcase the best academic practices. We’re spending millions more to support the Academic Transformation Plan. We’re committed to strengthening charter-school options. And we’ll fight for state and local policy changes that ensure students’ interests are paramount in every education decision. The more we succeed, the more parents and students will demand excellence. We will be there to help meet that demand and feed those hungry for learning. We hope you will be there with us.

ASPIR
ATION

INNOVATION

Learning to succeed, with help from you

By the time Wilhemina Koomson started kindergarten in Cleveland, her family had moved from her native Ghana to Jamaica, then to Trinidad and Tobago, then to West Park.

Readjusting to new surroundings didn't hold Wilhemina back, however. Four years of hard work and determination at the Cleveland School of Science and Medicine, where she graduated at age 16 as valedictorian, put her on the path to fulfilling her dream of practicing medicine. She's now a freshman at Princeton University.

The Cleveland Foundation was instrumental in founding the School of Science and Medicine in 2006. Today, it ranks among Ohio's best high schools. Every one of Wilhemina's classmates in its inaugural class won acceptance to a four-year university.



From her first day, she noticed that the new school's staff demanded that students aim high — for college and professional careers.

"I really want to express my thanks to everybody who invested in the School of Science and Medicine — the donors and all the people who put their time and money into making it what it is today," she says. "Back in the very beginning, when no one else saw the possibilities, they believed, and they worked to make it happen."

Someday, Wilhemina vows, she'll return to Cleveland as Dr. Koomson and help fellow immigrants and refugees. "So many people helped me get to where I am today," she says, "and I plan to come back and give something back."

COLLABORATION

INNOVATIVE SCHOOLS

History shows it's hard to build excellent school districts in large, poor cities. But there's an alternative: Build excellent schools a few at a time to incrementally overhaul a failing district.

We and our education-reform partners have been founding and funding opportunity schools for the last five years. The results so far are impressive. The 11 demonstration schools the Cleveland Foundation has supported so far are significantly outperforming peer schools by every measure: parent and teacher satisfaction, test scores, attendance, student and teacher retention, and more.

Those results show the power of innovation and highlight why we renewed our commitment to innovative schools in 2009 and 2010, as demonstrated by:

- Committing more than \$4 million to support the district's student-centered Academic Transformation Plan. That plan is closing failing schools, overhauling others, restructuring the central office, instituting teacher performance reviews, and holding every employee accountable for reaching goals.
- Supporting Cleveland's four high-performing, district-sanctioned charter schools. Our \$180,000 grant helped launch the fourth, called Village Preparatory School, in August 2009. A \$350,000 grant helped consolidate back-office support functions of all four schools, so cost savings can be used to improve education.
- Granting \$115,000 to WIRE-Net – the Westside Industrial Retention and Expansion Network – to plan, design, and create a next-generation career and technical learning center for high-school and adult students.



STEM BRANCHES OUT

Five years ago, Ohio's business leaders and the Cleveland Foundation looked at the state's poor performance in science, technology, engineering, and math education and saw an opportunity.

The STEM educational disciplines are widely accepted as a key to success in our knowledge-based, technology-driven world. STEM and innovation go hand in hand. Yet Ohio ranks 32nd in the nation in the rate of STEM bachelor's degrees awarded.

So, together with leaders in Ohio business and government, we committed to double the number of STEM degrees from Ohio's colleges and universities by 2015. We provided \$400,000 to the non-profit Ohio Business Alliance for Higher Education and the Economy. Its advocacy and policy work helped make STEM a state priority and resulted in \$200 million in state funding to establish STEM-

themed schools and programs of excellence. Two of those schools are regional academies in Cleveland: MC²STEM and Design Lab Early College High School.

We've also invested \$700,000 to date, including \$200,000 in 2009, into a partnership with the Woodrow Wilson National Fellowship and John Carroll University. This partnership is designed to create new training methods for STEM teachers and groom a new generation of them for Ohio's school children.

Learn more at www.ClevelandFoundation.org/Education

ASPIRATION



Neighborhoods

“Welcome to the neighborhood.” Can any phrase be more inviting? The neighborhood is home. We are social creatures, and we thrive when we connect, build friendships, and share a sense of community. But in hyper-mobile, consumption-oriented America, so many forces have coalesced against traditional city neighborhoods. For generations now, government policies in housing, transportation, economic development, and education have tilted away from urban neighborhoods, leaving them underdeveloped and underinvested. The foreclosure crisis further magnified the city’s disadvantage. At the Cleveland Foundation, we believe in neighborhoods. The success of our urban fabric is of paramount importance for the sustainability of our region. We want to help our city neighborhoods and their citizens to discover and harness their assets and character. That way, our urban fabric becomes stronger – strong enough to wrap us together into one whole community.

REMITALIZ
ATION

INNOVATION

Neighborhood Connections: small investments, big returns

Even a little money can be a big help to residents of Cleveland looking to improve their neighborhoods and brighten lives. Neighborhood Connections, our small-grant program for the city, exists to provide that help.

“Neighborhood Connections is grant-making at the grass roots,” says Tom O’Brien, its energetic program director.

Any group of Cleveland residents — not just registered nonprofits — can compete for a grant of up to \$5,000 for its plans.

Just a few of the funded projects: a new-neighbor welcoming brigade in Mill Creek, various arts and cultural fairs, community gardens, a senior-center activities club, a home-beautification program, music lessons for low-income children in Cuddell, farmers’ markets in Kamms Corners, Detroit-Shoreway, and Tremont, bike-safety rodeos for kids, and many more.



The program has become a national model. Its 24-member grantmaking committee of Cleveland residents has extended \$4 million in grants to 1,200 projects over eight years. Each recipient is obliged to match the grant through fundraising,

donated materials, or volunteer labor. That leverage has pushed Neighborhood Connections’ economic impact beyond \$8 million, before factoring in any economic multiplier effect.

But Neighborhood Connections’ impact goes beyond the economic. It helps to grow leaders in city neighborhoods.

It expands their networks to encompass other local leaders, key decision-makers at City Hall, and corporate heads.

“It’s not just about giving people grants,” says O’Brien. “It’s about giving them power.”

COLLABORATION

EVERGREEN: COOPERATIVES AND COLLABORATION

Each year, Case Western Reserve University, the Cleveland Clinic, and University Hospitals purchase more than \$3 billion combined in goods and services.

What if these Cleveland “anchor institutions” used more of their buying power locally and sent more procurement dollars flowing into the community? How would our neighborhoods and our neighbors benefit?

That “buy local” philosophy is the premise undergirding the Evergreen Cooperatives – innovative worker-owned companies that are spurring an economic breakthrough in Cleveland.

The Evergreen model goes far beyond urging local institutions to patronize local vendors. The foundation is collaborating with Cleveland’s big anchor institutions to understand their procurement needs. Then, together, we’re launching businesses tailored specifically to meet those needs – in ways that infuse hope and wealth into inner-city neighborhoods, where the need is greatest.

Evergreen’s worker-owned cooperatives don’t just cut paychecks – they create livelihoods and life-changing opportunities for employee-owners recruited from the distressed neighborhoods of Greater University Circle. These worker-owners earn a living wage and no-cost health insurance. But most importantly, they earn the power of an ownership stake in the business – personal equity that can grow to \$65,000 within eight years. This kind of wealth-building empowerment is all too rare in the target communities of Fairfax, Glenville, Hough, Little Italy, Buckeye-Shaker, and East Cleveland.

Evergreen businesses are green, too. They offer the most environmentally friendly techniques and technologies as a competitive advantage that helps large institutions meet their own sustainability and environmental-stewardship goals. That harmonious relationship is a win-win in the truest form.



One company, Ohio Cooperative Solar, installs solar panels and weatherization to help customers reduce their energy bills and carbon footprint and meet clean-energy mandates. Another, Evergreen Cooperative Laundry, boasts the state’s most environmentally friendly technology for laundering institutional linens. A third business, Green City Growers Cooperative, will supply millions of pounds of healthy lettuce and herbs from an inner-city greenhouse the size of five football fields.

Although young, the Evergreen Cooperatives are earning a lot of support and attention. The federal government and the city of Cleveland have created innovative financing mechanisms. Big national foundations are lining up to finance expansions here and replications elsewhere. Youngstown, Atlanta, Detroit, Pittsburgh, and Buffalo are studying ways to import Evergreen’s approach.

Evergreen is truly an enterprising experiment, winning praise from news-media outlets across the country and even abroad. They call it “the Cleveland model.”

REDEVELOPMENT FOR RESIDENTS

Other examples of our commitment to strengthening Cleveland’s neighborhoods include:

- A \$1 million loan in June 2010 for a \$21.3 million redevelopment of historic Saint Luke’s Hospital into ultra-energy-efficient elder housing.
- Grants of \$4.5 million per year in 2009 and 2010 to Neighborhood Progress Inc. to revitalize neighborhoods in partnership with six community-development corporations: Buckeye Area, Detroit-Shoreway, Fairfax Renaissance, Famicos Foundation, Slavic Village, and Tremont West.

Learn more at www.ClevelandFoundation.org/Housing

REVITALIZ ATION



Human Services

There is no doubt that childhood and adolescence can be tricky phases of life to navigate. Young people often feel frustrated and isolated, sensing that their voices are unheard. These issues become magnified among our youth living in the inner city and inner-ring suburbs. Consider these signs that growing up today is hard to do:

- One in 10 children ages 6 to 12 regularly spends time without adult supervision.
- The teen-pregnancy rate in the United States is the highest in the industrialized world.
- Three in 10 U.S. teens drop out of school, and in urban areas nearly half of them quit.

To avoid those pitfalls, kids need adults to care, help, teach, and listen. You, through the Cleveland Foundation, are providing that help.

MOTIVATION

INNOVATION

Yesterday's loving gift helps kids today, forever

Nancy Lyon Porter loved children so much that after showing her own five kids with affection, she had much more to give to other youngsters.

For decades, Mrs. Porter committed herself to nonprofits that touched thousands of young lives, and she wanted her impact to endure.

It does — today and forever — through the Nancy L. and Frank H. Porter Fund at the Cleveland Foundation.

Mrs. Porter died in 1996, followed by her husband six years later. Yet they live on through a bequest that will perpetually generate millions of dollars annually to support nonprofit programs, especially those dedicated to children and families.

Says daughter Elizabeth Porter Daane, "It is really important to our family that even beyond our time on earth, the

seeds that have been planted through this gift will help Cleveland and Clevelanders flourish."

A recent beneficiary is MyCom, the foundation-initiated youth-enrichment partnership in urban neighborhoods.

Also benefiting is the Center for Families and Children, an agency that Mrs. Porter long supported, as well as the Boy Scouts and the YMCA.

The flexibility to reallocate grants as Cleveland's needs change is one beauty of giving to the foundation, says the Rev. Frederick Porter, son.



"Unless we use eyes of faith, we can see only to the horizon of our own lives; we can't really imagine our work continuing on after," he says.

"It's marvelous that these gifts will keep helping this community eternally."

COLLABORATION

CONNECTIONS BUILD COMMUNITY

We believe every child has potential for greatness. Through the work of the Cleveland Foundation-initiated MyCom program, we mitigate inner-city adolescents' exposure to risk so that we can harness their potential and help develop the leaders of tomorrow.

MyCom – My Commitment, My Community – may be the most ambitious, innovative effort ever in Cuyahoga County to embrace disadvantaged youths, connect them to caring adults, and enrich their lives with out-of-school activities and jobs. It's a \$6-million-per-year partnership among hundreds of organizations to create a safety net for kids. The foundation's \$2.5 million in grants to support MyCom in 2009 leveraged \$4.1 million from other funders, including our main partner, Cuyahoga County.

MyCom is more than a program. It is a youngster's connection to all the programs out there. Some 250 community organizations, government agencies, faith-based groups, and youths came together to plan and launch it in 2008. MyCom's evolving online and phone-accessible directory connects parents and kids to more than 1,900 activities and options at nonprofits, libraries, government agencies, and schools. Those partners offered more than 130 programs, mostly in the summertime. They include tutoring, career exploration, sports and recreation, and much more. The jobs program found summer work for 3,600 teens. But with more than 11,000 teen applicants, more summer jobs are needed.

Research demonstrates that after-school programs, out-of-school activities, and summertime jobs make a difference. These healthy activities correlate with decreases in drug and alcohol abuse, smoking, delinquency, and other risky behavior. They're associated with safer neighborhoods, lower school-dropout rates, and better academic performance.

MyCom is designed to empower its participants. Youth advisors have been involved from the start, suggesting child- and teen-friendly activities and evaluating existing offerings. Kids even came up with the MyCom name.

We and our partners have concentrated MyCom's offerings in eight pilot neighborhoods: Bellaire-Puritas, Central, Cudell-West Park, Mt. Pleasant, St. Clair-Superior, Slavic Village, northern Parma, and southern Shaker Heights. We hope to expand into more neighborhoods.

ACCESSING BEST PRACTICES

Project Access, we like to say, is like an MBA program for small nonprofits, giving them intensive training to run better businesses.

Faith- and community-based organizations have long offered hope and help for our most vulnerable people. Devotion and neighborhood roots give these organizations street credibility that bigger nonprofits often lack. Yet the grassroots operations are typically labors of love, understaffed and underequipped.

Project Access, administered by the foundation, is a consortium of universities and nonprofit organizations committed to helping these groups become more professional, effective, and innovative, so that they may serve more people. Experts evaluate and train organization leaders, help them build peer networks, and maintain coaching and advisory relationships. Groups that successfully complete the program can qualify for small grants for equipment, software, or other needs.

In five years, Project Access has served more than 150 organizations; they, in turn, serve 278,000 people.

Learn more at www.ClevelandFoundation.org/HumanServices



MOTIVATIONAL



Arts and Culture

Cleveland's artistic and cultural traditions have long been beacons that light residents' lives, attract visitors and newcomers, and keep our city high on the list of desirable places to live and do business. But art and culture cannot live in the past. They must grow and evolve to remain relevant and compelling in changing times and to stay strong enough to weather economic cycles. The Cleveland Foundation has always held arts organizations' needs high among our priorities. Our support ranges from small grants for neighborhood projects to multi-million-dollar investments in the long-term excellence and sustainability of our largest and most globally renowned organizations. Rarely has that sustenance been more timely or crucial than in the last few years. We're delighted to have been able to continue our support, not just for the arts' sake, but for every man, woman, and child whose lives are enriched by our community's vast arts offerings.

IMAGIN
ATION

INNOVATION

Anisfield-Wolf Prize mixes intimacy, potency, grandeur

Tickets to the Anisfield-Wolf Book Awards ceremony always go fast. But for the 75th anniversary celebration in 2010, they were gone within hours — all 1,000 of them.

That demand is a tribute to the growing national and international prominence of the prize, and to the literary, cultural, and artistic sophistication of its birthplace city, says Henry Louis Gates Jr., the distinguished Harvard scholar and cultural critic.

“This prize is one of the most prestigious in the literary world,” says Gates, the perennial emcee and jury chair.

“It’s appropriate that the ceremony has become a big event — one that manages to be both intimate and grand. And Cleveland, itself intimate and grand, is the ideal host.”



Edith Anisfield Wolf, a poet, businesswoman, and social activist, was far ahead of her time when she created the award to recognize literary works that confront racial, ethnic, and cultural perceptions. The year was 1935 — two decades before the advent of America’s civil-rights movement. Her prize has since honored a literary Who’s Who: Langston Hughes, Dr. Martin Luther King Jr., Toni Morrison, and nearly 200 others.

Edith Anisfield Wolf, who died in 1963, asked the Cleveland Foundation to sustain this tradition. Sharing her passion and shepherding her bequest, we point with pride to the growing distinction of this national book prize and the spotlight it shines on Cleveland for one very special night each September.

COLLABORATION

SUSTAINING EXCELLENCE

Even before the Great Recession, our city's leading arts institutions realized that to make enough money, grow audiences, and stay fiscally fit, they were going to have to take risks.

The Cleveland Orchestra, for instance, considered residencies in Miami and Europe. Other institutions aimed to move to new venues, or launch novel audience-building campaigns – costly plans amid growing cuts in arts funding.

So in 2008, the Cleveland Foundation's board of directors quietly launched Sustaining Excellence, a three-year, invitation-only program of special support for some of the city's most important arts organizations: Apollo's Fire, Cleveland Orchestra, Cleveland Play House, Cleveland Public Theatre, Community Partnership for Arts and Culture, Great Lakes Theater Festival, Museum of Contemporary Art, Opera Cleveland, and Playhouse Square.

Now in its final year, Sustaining Excellence has extended a safety net of \$6.6 million in grants, ranging from \$75,000 to \$1.2 million each, to buttress those organizations as they moved to become more self-sustaining. Among the outcomes: Apollo's Fire's plans for its first international tour, Cleveland Play House's historic commitment to relocate downtown, MOCA's looming move to University Circle, and Cleveland Public Theatre's successful marketing campaign.

ART BEYOND BORDERS

Historically, most of our city's traditions in classical music, visual arts, and theater have reflected the Western European roots of most of Cleveland's artists and audiences.

They're proud traditions with a proud lineage. Yet as Cleveland strives to become increasingly global and vibrant, our culture has room for more artistic diversity.



So our board authorized Creative Fusion, a program that reaches around the globe for new artistic influences to bring to Cleveland. Creative Fusion hosts international artists here for extended stays. The program links them to students and audiences across the region in the hope that a deep engagement will infuse our culture with diverse new influences.

For instance, our first artist in residence, Turkish playwright Özen Yula, spent 10 weeks mentoring and challenging a group of students from seven Cleveland public high schools as they wrote a play. At the same time, Yula directed Cleveland State University dramatic arts students in a production of his play about political banishment, called "codename:EXILE."

Creative Fusion also hosted two other artists of Turkish origin – Gypsy dancer Sevi Bayraktar and visual artist Serpil Sevgen Schmutz – and South African visual artist Nandipha Mntambo.

GROWING AUDIENCES

The long-term sustainability of our city's artistic and cultural offerings depends on cultivating enthusiastic audiences, artists, and patrons of the future. So we're pleased to support such efforts.

For example, we granted \$278,000 in mid-2010 to Young Audiences of Northeast Ohio and its in-school arts programs for 256,000 students across Cleveland and its suburbs.

We also give to Joyful Noise, which offers free music lessons to children in targeted Cleveland neighborhoods. Our funds have helped that small but lovely organization double the number of students it serves.

Learn more at www.ClevelandFoundation.org/Arts

IMAGIN ATION

Grantmaking Highlights

With a Focus on Small Grants

We believe grants of all sizes can make a difference. Each year, we authorize about 3,000 grants to meet community needs. Following are just a few small grants made in 2009 and 2010 in the four primary areas in which we focus:

1 GRANTS THAT IMPROVE ACCESS TO SERVICES AND PROGRAMS FOR VULNERABLE AND UNDERSERVED POPULATIONS

Aspira Association

\$150,000 for pilot program to increase retention, achievement, and advancement of Latino students in partnership with Esperanza

Cleveland Foodbank

\$300,000 to help meet growing demand for services during the recession

Cuyahoga County Public Library

\$198,690 to improve career counseling and technology programs for local residents

Eleanor B. Rainey Memorial Institute

\$250,000 for its capital campaign for a new facility

MobileMed 1 Foundation

\$85,000 to pilot Medworks' free mass health clinics in Greater Cleveland

S.A.W. Inc.

\$104,975 for H.E.A.R. program for clients needing assistance with both developmental disabilities and hearing impairments

Westside Industrial Retention and Expansion Network

\$115,000 for the second year of its citywide manufacturing initiative

YWCA of Greater Cleveland

\$75,000 for the Nurturing Independence and Aspirations program for young women transitioning out of foster care

2 GRANTS THAT STRENGTHEN NONPROFIT ORGANIZATIONS

Art House

\$39,000 for strategic financial planning

Business Volunteers Unlimited

\$75,000 for technical assistance to nonprofits

Care Alliance

\$100,000 for electronic health records to improve patient care and organizational efficiency

Children's Museum of Cleveland

\$44,000 to upgrade IT systems to improve operational efficiencies

Cleveland Jazz Orchestra

\$24,500 for the 2009-2010 season and its return to downtown and nearby neighborhoods

Cleveland Restoration Society

\$150,000 for expansion of Heritage Homes and Neighborhoods program

Golden Age Centers

\$120,000 to strengthen programming for seniors, including home-delivered meal service

Open Doors Inc.

\$40,000 for strategic growth initiative to ensure quality after-school programming

Towards Employment

\$160,000 to support organizational improvement, advocacy, and re-entry programming

3 GRANTS THAT TEST NEW IDEAS AND DIFFERENT PARTNERSHIPS

Boys and Girls Club of Cleveland

\$185,000 for school-based programs and gang outreach initiative

Broadway School of Music

\$23,000 for Cleveland Neighborhood Arts' curriculum and evaluation project, a joint effort among nine place-based arts groups

Cleveland Institute of Art

\$20,000 for reclaimed furniture initiative

Cleveland Museum of Art

\$50,000 for collaboration with artists from Burkina Faso, Africa

Free Medical Clinic of Greater Cleveland

\$46,525 to strengthen patient-advocate program

ParkWorks

\$250,000 for Land Reutilization Action Plan and Northeast Ohio Food Assessment and Business Plan

4 GRANTS THAT SUPPORT POLICY AND ADVOCACY

Center for Community Solutions

\$100,000 for AIDS Funding Collaborative

Cleveland State University Foundation

\$20,000 for the Center for Energy Policy and Urban Change

Heritage Ohio Inc.

\$10,000 for economic impact of Ohio Historic Tax Credit project

KnowledgeWorks Foundation

\$6,200 for phase four of the Governor's Institute for Creativity and Innovation in Education

Ohio State University Research Foundation

\$50,000 to the Cleveland-Cuyahoga County Food Policy Coalition for strengthening the local food economy and increasing access to local, healthy, affordable food

Policy Bridge

\$50,000 for 2010 initiative related to research, policy briefings, and community forums

Policy Matters

\$75,000 for the expansion of work around asset building, consumer protection, and Earned Income Tax Credit

Listening and Learning

Innovation rarely comes out of nowhere. It usually arises from new knowledge, new pressures, or both. At the Cleveland Foundation, we constantly seek valuable new knowledge to help us innovate and better serve our grantees.


For example, we engaged the Center for Effective Philanthropy in 2009 to survey our grantee partners for anonymous feedback on our strengths and weaknesses. The center compiled the agencies' evaluations into a report card that showed how our grantees graded us and how we fared relative to hundreds of other foundations across the nation. In short, we did quite well.

Grantees rated us highly for our strong, positive impact on the community and, more specifically, on the fields in which they work. In addition to the financial resources we give, they like that we provide them tools for success, share our expertise, and help leverage resources from other funders. We were heartened by their many positive comments.

But we have room to improve. Smaller grantees say they need more time and guidance. Grantees also suggested that we be clearer

about our priorities and streamline some procedures. (You can read the entire report at www.ClevelandFoundation.org/Report.)

As we continue this important dialogue, we hope to serve the community as effectively as possible. As the people's foundation, we invite you to suggest ways we can further innovate to serve Greater Cleveland.



Robert E. Eckardt
EXECUTIVE VICE PRESIDENT

PARTICIPATION

New Gifts

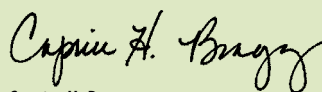
The idea for the Cleveland Foundation sprang from the mind of Frederick Harris Goff, CEO of Cleveland Trust Bank and a mover and shaker in the city who liked to think big.

His innovative spirit led to our founding in 1914, making it possible for Greater Clevelanders of all means to build a lasting legacy.

In 2009, we received more than 1,300 gifts, large and small, totaling \$36.3 million. These gifts created family funds, supported special initiatives, or provided broad support for our work.

Although these gifts and funds support many different causes, the overarching intention is the same: improving the quality of life for Greater Clevelanders in Cuyahoga, Lake, and Geauga counties.

We are so deeply appreciative of the tremendous support and generosity of our donors and what they enable the foundation to do for our beloved community.



Caprice H. Bragg

SENIOR VICE PRESIDENT FOR GIFT PLANNING AND DONOR RELATIONS

2009

A

Anonymous (25)
Linda M. Abraham-Silver, Ed.D.
Nelson and Kay Abrahamson
Ian Abrams
Academy of Mantis Boxing
Charles E. and Jennie B. Adams Trust
Jonathan D. Adams and Pamela T. Conover, M.D.
John and Pamela Addison
Kevin S. Adelstein
Stanley I. and Hope S. Adelstein
Philanthropic Fund of the Jewish Community Federation of Cleveland
Admiral Products
Adoption Network Cleveland
Barbara Ague and Thomas Safford
Jan Akos
Wayne and Marnie Albers
Judith C. Allen
Trevor Allen
Alliant Techsystems
Alpha Omega Foundation
Donald R. Altemus
American Orff-Schulwerk Association
Nicola Ammons
Diane M. Anderson
Gregory L. Anderson
James and Barbara Anderson
Joanne Anderson
Barbara C. Andrews
Audrey L. Andzelik
Louis and Irene Anetakis

Charles P. Bolton
Corinne Bongers
Bill Borrelle and John Hearn
David and Phyllis Bosomworth
Virginia K. Bosomworth
David and Anita B.G. Botnick
Bowden Manufacturing
Michelle Boyd
Nancy Boyd
Christopher Brandt, M.D. and Beth Brandt Sersig, M.D.
Stephen and Sue Braunfield
Mildred C. Brenkus
Jeannette W. Brewer Pooled Income Fund
Christie Briggs
James and Mary Bright
Jack and Wilda Bronson
Arthur V.N. Brooks
Marilyn R. Brooks
Gerald F. Broski
Helen I. Broszczuk
Charles and Helen Brown Memorial Foundation
Grace C. Brown, Ph.D.
Jean T. Brown
Rusty Brown
Tilmon and Jonnie Brown
Bryant & Stratton
Buckingham, Doolittle & Burroughs
Friends of Armond Budish
Estate of Warwick Buer
Charles E. Burkett Jr.
John and Barbara Burns Foundation

Ruth H. Cohn Charitable Remainder Annuity Trust
Helen C. Cole Charitable Trust
College Club of Cleveland Foundation
Comma
Communications Workers of America
Communications Workers of America Local 4379
David P. Condit
Robert and Jean Conrad
Eileen G. Consolo
Jerry and Rita Cook
Estate of George B. Coombe
C. Linda Cooper
Karen Cooper
Suzanne Cooper
James W. Corrigan
Linda Costello
Trust of Jane E. Coulby
Magdalena Covas
Ensign J. Cowell
Richard F. Coyne
Gerry and Louise Craft
Mary Anne Crampton
Dan Crandall
Cravat Coal Co.
Lois Crawford
Debby Crow
Charles R. Crowley Jr.
CRT/tanaka
Paul Csia
Martha W. Cubberley
Robert R. and Gay C. Cull Family Foundation

Kevin J. Ellison
Hamilton and Lillian Emmons
Ann L. English
George and Anita Eppley
Epstein/Zuckerman Family Foundation
Constance Erhard
Ann and Richard Ernst
Esperanza
Doris A. Evans, M.D.

F

Joan Fahey
Fairfax Renaissance Development Corp.
Betty H. Fairfax
Jean E. Fairfax
Ann Fairhurst
Fairmount Minerals Foundation
Richard J. Fassenmyer Foundation
Gene and Marion Faubel
Bruce Feher
Michelle Felder
Lydia Fenner
William Fichter and Kimberly Langley
Susan Fine
FirstMerit Bank
Ralph and Diane Fisher
Ruth Fisher
Folio Club
George and Eleanor Ford
Forest City Enterprises Charitable Foundation
Tyrone Forman and Amanda Lewis
Fortnightly Musical Club of Cleveland

Marlene Gross
Grossi Family Foundation
Claudia Gruen
William and Rebecca Gruss
George Gund Foundation
Barbara Gurney
Jeannine Gury
Marie L. Gustavsson-Monago

H

Alice Haas
James and Shelly Haas
Kenneth and Kathleen Haber
Robert Hager and Mary Miralia
Vivian and Garland Hairston
Mark A. Hale
Debbie Hall
Howard R. Hall
Jeanie M. Hall, Ph.D.
Janet L. Hallman
Jack A. Hamilton and Associates
Ambassador Holsey Gates Handyside
Azadeh Hardiman
Mikel and Colleen Harding
Millie Harnocz
Harris Family
Vern Hartenburg
Joseph and Mary Hassing
John E. Hawkins
Frank M. Hawley Trust
George and Nancy Hawthorne
Jeanette Haynes-Gordon
Alyson W. Hellman

Mark E. Angel
Wynne T. Antonio
Janice S. Apple
Patrick Arch
Lois C. Armington
Michael and Candace Armstrong
Gail S. Arnold
Keith A. Ashmus
Frank and Dorothy Ashton
Theodore and Dona M. Ashton
AT&T Foundation
Kathleen A. Augustine
AVI Foodsystems

B
Cynthia L. Bailie
Lawrence and Anita Baker
Arthur and Margot Baldwin
Robert Ballard
Florence Banks
Reka Barabas and Jeffrey Moore
Estate of Vivian R. Barnes-Major
Ward Barnett
Michael Barnhart
Joseph Barr, O.D.
Dennis and Kathleen Barrie
Cynthia Bassett
Robert J. Batyko
Martin and Barbara Baum and Family
James and Reita Bayman
David Beach
Teresa Metcalf Beasley, Esq.
Kathy Beaty
Glenn and Nicole Bebie
Terri J. Becker
Betsy L. Beckwith
Bedford Historical Society
Betsy Bell
James Bell
Lynn Bender
Allan J. Benek
Matthew Bennardo
Megan Bennett
BER Holdings
Michael P. Bergeron Foundation
Reiles and Polly Berry
Berson-Sokol Agency
Susan C. Bianco
Cheryl Bierworth
BIMG
William Binggeli
Christina J. Bittenbender
Black Professionals Association Charitable
Foundation
Carolyn Black-Smith
Marcia S. Bliss
David and Dana Blocker
Bobbie's Green Thumb
Judy Bohardt

*Deceased

Charles Bush, Ph.D.
Business of Good Foundation
Concetta L. Butala
Gerald and Marilyn Butcher
James N. Butler
Stephen Byrne

C
Noe Cabrera and Lorena Garcia
CafePress.com
Linda A. Cahill
Nancy B. Calcott
Janice C. Calfee
Hugh Calkins
Robert M. and Lori B. Campana Foundation
Margaret Campbell
Marlene Campbell
Michael F. Caputo
Kathryn A. Carlson
Penelope Carnahan
Clyde and Linda Carpenter
D. Michael Carroll
Carrousel Inc.
Carrousel of Cleveland, Ohio
Helen Cejka
Melissa and James Cellura
Central Illinois Typographical Union
Betty R. Chaka
Champion Insurance
Champion Rotary Club
Kelly Chapman
Inajo D. Chappell
Charter One Foundation
Gerald Chattman
Althea Cheatham
Michael E. Chesler
Mary Jane Christyson
Molly Church
Phyllis Cimaglio
John Cipolla
Catherine A. Clark
Janie V. Clark
Steven Clark
Classic Diagnostic Imaging
Cleveland Cavaliers
Cleveland Clinic Foundation
Cleveland Foodbank
Cleveland Indians Baseball Co.
Cleveland Industrial Warehouse
Cleveland Metroparks System
Cleveland Museum of Natural History
Cleveland Police Patrolmen's Association
Social Club
Climaco, Lefkowitz, Peca, Wilcox and
Garofoli
CMOS Collectibles
Jonathan and Sarah Cochran
Vickii P. Coffey
Charles and Quinters Cohen

Richard and Maryanne Cullom
Christine G. Curtis
Cuyahoga County Auditor
Cuyahoga County Democratic Party
Cypress Corp.

D
Beau Daane
Manohar and Chandra Daga
Regina Daniel
Georgiana Davidson
Renee S. Davis
Alfred Day
Jeffrey H. Day
Lynne Day
Andrea and Chad Deal
Judith A. Dell
Delta Sigma Theta Sorority
Fedora DeMattia
Thomas DeSantis
Caroline H. DesPrez
Thomas and Myrna Dettelbach
Sam and Leslie Dickerson
Anthony M. DiGeronimo
Alan Digirolamo
George and Maria Dimitriou
Dimora Boosters Committee
Discount Drug Mart
District IV Clergy Disciples of Christ
Dix & Eaton
Frances V. Doggett
Jeffrey Doggett
William H. Doggett Jr.
Norma Dolezal
Henry and Mary Doll
Dollar Bank Foundation
Dominion East Ohio
Dominion Foundation
Mark and Fran Doris
Janelle Dougherty
Michael D. Dovilla
John E. Doxsey
David Drechsler
Harry H. Drysdale Trust
David Duane
Virginia C. Dunn
Joanne Frances Durante
Richard Dusky
Carol M. Dybo
Carl J. Dyczek, Esq.
Joyce and Daniel Dyer

E
Early Childhood Enrichment Center
Todd and Lia Easler
Ginny and Bob Eckardt
William and Gertrude Egbert
84 Lumber Co.
Russ Elek

Linda L. Fousek
Fox and Cenedella Charitable Gift Fund
of the Fidelity Charitable Gift Fund
Harry K. and Emma R. Fox Charitable
Foundation
Carol A. Fricke
Sydney and Pearl Friedman
Marcy and Loren Frumker, D.D.S.
Estate of Eddie L. Fryer Jr.
Gaylord and Christine Fryer
Harrison and Adele Fuerst
Arthur L. Fullmer
David and Margaret Fullmer

G
Jean B. Gaede
Monica Gallo
Donald and Yolanda Games
Debby Gant
Mark Gardner
Gary Newspaper Guild
Leah S. Gary
Eleanore L. Gates
Joseph Gauntner and Mary Jo Tadsen
James E. Gaydosh
Marian Geater Charitable Trust
Blythe Gehring
Raymond L. Gellein Jr.
Raymond L. Gellein Sr.
Eleanor Geniusz
Leslie Gentile
Richard Gibson
Cecelia J. Gilcher-Powers
Anne L. Ginn
Girl Scouts of Greater Los Angeles
Anthony J. Giunta Jr.
Justin Glanville
Nancy H. Glende
Robert and JoAnn Glick
Ted and Nancy Goble
Sheila A. Gogate
Timothy and Dawn Golba
Marcie Goodman
Ruth Weber Goodman Trust
William and Patricia Gordon
Joseph T. Gorman and Family Fund
Margaret L. Goss
Scott and Anne Goyetche
Donald Graham
Theodora Graham
Great Geauga County Fair Foundation
Joan H. Green
Tina Y. Green
Stuart Greenberg
April Greene
Geoffrey and Helen Greenleaf
Floyd J. Greer Jr.
Nancy L. Griffith
Regina M. Grooms

Peter and Shirley Henderson
Dorothy W. Henry
Patrick Henry
Herbruck Alder
Higley Co.
Albert M. Higley Jr.
Anne and Thomas Hilbert
Cheryl E. Hill
Elizabeth S. Hill
Tasha J. Hill
Karen L. Hiller
Philip and Heidi Hilty
Robert Hinkle
Edith Fellingner Hirsch
Edith F. Hirsch Philanthropic Fund
of the Jewish Community Federation
of Cleveland
Clifford and Diane Hite
HKM Direct Market Communications
Darrell and Ann Holland
Ronald Holman II and Susan Stephens, M.D.
Holmes-Liberty High School Class of 1940
Shelby L. Holmes
Jeffery Hood and Pamela Smith-Hood
Kenneth and Margaret Hopkins
Robert J. Hopp
Houston Society Community Fund
Robert C. Howard
Kate Howley
Jacqueline L. Hoyt
Andrea C. Huemmer
Dave and Betty Hughes
George J. Hughes
Patrick Hughes
Judith E. Hunt
Tom and Amy Huntley

I
University of Illinois at Chicago,
Department of African-American Studies
University of Illinois at Chicago, Department
of Criminology, Law and Justice
Interstate Development
Invacare Corp.
Irish American Archives Society
Isabella & Co.
Raymond Isabella

J
J&C Group
Andrew Jackson
Jacobs Vanaman Agency
Donald and Judith Jacobson
Raisa G. Janke
Jannx
Estate of Alice M. Jarr
Jeffries, Kube, Forrest & Monteleone
John Hancock International Group
Department Employees
Judy Johnson

A listing of our donors can be found at www.ClevelandFoundation.org/Gifts



Kevin K. Johnson and Constance Hill-Johnson
Nancy Kurfess Johnson, M.D.
Waldo E. Johnson Jr.
Anne M. Jones
Jerry W. Jones III
Richard and Jayne Jones
Steven Jones
William M. Jones
Deborah Jones-Williams
Monique S. Jordan
JPMorgan Chase Foundation
Bruce E. Jurgens
Nancy and Donald Junglas, M.D.

K

Kaiser Foundation Health Plan of Ohio
Lori Kalic
James and Mary Kander
Karen Kannenberg
Katherine I. Kanzinger
Stanley and Hollis Kaskey
Katie's Korners
Keithley Foundation
Michaela Kekedy
Patricia Kelley
James X. Kelly
Lynn Kempf
R. Eric Kennedy
Richard J. Kerber
Nancy R. Kermode
Samantha Ann Kerr
Valerie and Glenn Kershaw
Denise D. Kestner
Key Foundation
Joseph F. Kickel
Edna and Elaine Kidder
Nelson and Reda Kidder
Bernice Kilcoyne
Mimi E. Kim
Anne Kimmins
Frances M. King
Kiwanis Club of Champion
Susan Klarreich Trust
Klein Lottman Family Fund
Michael Klein
Polly Kleinman
Stuart and Terri Kline
Gail Klingenberg
Klipper Properties
Denise J. Knecht
Patricia A. Knott
Dale Kocen and R. Robertson Hilton
Judie Koenig
Sandra I. Kiely Kolb
Kathy Kolesar-Aftoora
Kathy Kooyman
Mary and Frank Korzen
John Kosek

Agnes Lutsch
Kathryn M. Lyle

M

Karen MacDonald
Alex Machaskee
James MacKenzie
Linda Macklin
Barbara Maddox
Mary Jo P. Madewell
Rachel E. Madewell
Terrance and Christine Mahon
Kent A. and Debra M. Majewski
Ashley Mallett
Marilyn M. Mallett
Constance C. Manuel
John Marshall Alumni Association
Nancy Clay Marsteller, M.D.
Franklin and Claudette Martin
Leah Martinez
Mascoutah Typographical Union 443
Robert and Linda Maskulka
Emma J. Mason
Heath P. Mason
Thomasine B. Mason
Elizabeth B. Mastrangelo, Ph.D.
Ellen L. Mastrangelo
Lisa B. Mastrangelo
Elizabeth Ring Mather and William Gwinn Mather Fund
Angelyn Mattson
Julie Mawaka
Ruth E. Maxon
May Group
Richard and Christine Mayer
Mayfield Business Education Community Alliance Foundation
Charles McAtee
Elizabeth F. McBride
William K. McClung
State Rep. David McCluskey
Onni McCoy
Diane O. McDaniel
Lolita M. McDavid, M.D.
David and Judy McDowell
Thomas McGinty
Jamie A. McGuire
Sheila R. McHale
Richard and Dorothy McHugh
Patricia McLaughlin
Victoria McMillan
Steve McPeake
Medical Mutual of Ohio
Medical Service Co.
Heather Meeker
Carol Meermans
James and Cynthia Meketa
Mohinder Merchea, M.D.
Estate of Albert Y. and Kathryn A. Meriam

Elizabeth B. Nuechterlein
Katrina L. Nummela
Njeri Nuru-Holm, Ph.D.

O

OAPSE, Executive Board and Staff
Richard Obermanns and Carolyn Charles
Ann C. O'Brien
Kristy O'Carz
OCD Agency
Peter S. Oduwole
Timothy P. Offtermatt
Ohio Long Term Care Brokers
Ohio State Eagles Charity Fund
O'Leary-Gillett Family
Andrea L. Omerza
William J. and Dorothy K. O'Neill Foundation
Harvey G. Oppmann
Lindley Overmyer
Betty Jane Owens
Ericka A. Owens
Wayne and Barbara Owens
Paul and Betty Oyaski

P

Joyce A. Pace
Family of Marjorie Pallotta*
Pat Papesh
Vasiliki Papouras
Linda and Elias Pappas
Joan Parks
Elizabeth and Brendan Patterson
Jeffery K. Patterson
Ed Pavlish
Luke Wilson Peck Family Fund of CITI Gift
Fatima Perkins
Gregory F. Perlman
Stephanie Perrin
A. William and Josephine Perry
Bettie J. Perry
Stephen and Felicia Perry
Richard and Elizabeth Peterjohn
Gary L. Peters
Sara A. Peters
Shirley A. Peters
Deborah L. Petrick
Suzanne Pharr
Phi Beta Gamma
Phillis Wheatley Association of Cleveland
Andrew Pierson
Kenneth E. Pike
Gary Pinkerton
Karyn Pistone
Cheryl Pitcock
PNC Foundation
Polish American Cultural Center
Judy and Thomas Polomsky
William and Nancy Polomsky

Gregory and Dominique River
Thomas Robatin
Scott Robbins
Georgianna T. Roberts
Jack Robertson
Linda F. Robertson
Robinson Family Philanthropic Fund of the Jewish Community Federation of Cleveland
Ann E. Rocco
Rock and Roll Hall of Fame and Museum
Norton W. Rose
Sandra Henighan Rose
Bohdan W. Roshetsky
Betty Rosskamm
Robert Rotatori
Fred and Jackie Rothstein
RPM International
Joanie Rubinstein
Susan M. Ruffin
Run for Grace and Andy
Timothy P. Ryan

S

Marvin and Sharon Sable
Carol J. Sadewasser
Safeguard Properties
Barb Saifman
Saint Luke's Foundation of Cleveland
Constance W. Sallee
Shelly L. Saltzman
Edith Sampson
Sharon Sandifer-Crawford
Karen Sayre
Christine A. Schipke
Kathleen T. Schlemmer
Ken Schoch
James and Anne Schoff
Thomas and Elizabeth Schorgl
Amy Schroeder
Schron Family
William and Dallas Schubert
Susan M. Schwartz
Schwebel Family Foundation
Francis and Mary Schwendeman
Carol K. Scism
Scottish Heritage Association of NE Ohio
Nancy Seelbach
Grant Segall and Victoria Belfiglio
Nancy P. Seitz
Susan V. Seitz
Suzzanna Selvey
Senkfor Family Foundation
Melvin and Maude Shafron
Shaker Heights Public Library
Shaker Historical Society
Irene Shaker
Debra Shankland
Alcindor and Keisha Shaw

T

Nelson Talbott Foundation
Cynthia Tancer and Louis Giesler
Sandra Tata
June Taylor and Conrad Metz
Laquita M. Taylor
Mallory Taylor
Michael J. Taylor
Third Federal Foundation
Kitty Thomas
Paul and Mary Thomas
Curtis Thompson III
Neil and Kathy Thompson
Three Village Condominium Association
Taliva A. Tillman
Allyson Tonozzi
Towers Watson
Phillip and Traci Trem
Heather Triplett
Amy and Gregory Tullis
Alexandra and Gregory Turk
Friends of Nina Turner

U

Maynard and Margaret Unger
United Way of Greater Cleveland
United Way Services of Geauga County

V

Benjamin F. Vail
Iris J. Vail
Marilyn Vance, Ph.D.
Vance Village Social Committee
Robert S. Varda
Jen Veasey
Catherine and Dale Veres
Joyce Vieland
Vorys, Sater, Seymour and Pease
Betsy Vuillemot-Figgie

W

Thomas and Susan Wagner
Cheryl Waite and Edwin Romero
Iva Walker
David and Sara Wallace
Michael and Joanne Wancata
Douglas Y. Wang
Jeffery Wanser and Linda Spear
David M. Ward Trust
John and H. Victoria Warden
Linda Warren
Mary Warren
Neil R. and Constance B. Waxman
Ronald F. Wayne
WCLV Foundation
Jonathan F. Weaver
Mary A. Weber
Mary Weems
Weingart Design

Melinda Kovalcheck
David L. Krause
Evelyn Krent
Kresge Foundation
Shannon Kriegmont
Dolores Kubicek
Nicholas Kundmueller
Lillian A. Kuri

L

Laborers International Union of North America
William C. Lahman
Lori White Laisure
Lake Ridge Homeowners Association
Lake View Cemetery Association
Lakewood Historical Society
Kenneth and Linda Lanci
Tom and Samie Lang
Kim Langley
Marilyn Lantz
Mary F. LaPorte
Avis E. Lappin Trust
Kenneth and Tracy Larson
John Latham
Lee A. Lazar
Sharon M. Leak
Benson and Vicki Lee
Pat Leech
Kevin Leeson
Marc Lefkowitz
Lehigh Elementary Eco-Kids Club
Mark Lekan
Ndeda Letson
Exodus Lett
Marcia and Harold Levine Philanthropic Fund of the Jewish Community Federation of Cleveland
Susan C. Levine
Albert and Joanne Lewis
Elizabeth Lewis
Mary Jane Lewis Trust
Brenda G. Liggins
George S. Lima
Lawrence and Bonnie Lindberg
Linking Employment Abilities and Potential Links Cleveland Chapter
Paula Lipka
Ned and Patricia Livengood
Sue M. Livingston
Dallas and Susan Logan
Barbara Lontor
Carol and Gilbert Lowenthal
James G. Lubetkin
Lubrizol Corp.
Betsey L. Luce
Stanley and Pamela Luksenburg
Tila J. Luschin
Lutheran Metropolitan Ministry

Fran Meyers
Jessica Meyers
David D. Michel
Microsoft Giving Campaign
Kathy Mihalic
Margaret Milbourn
Meredith Milbourn
Sara Milbourn
Carrie E. Miller
Joseph and Mary Miller
Leigh Ann Miller
Linda P. Miller
Lynn Miller
Robert and Sheryl Miller
Samuel H. and Maria Miller Foundation
Roberta L. Milliken
Carolyn Milter
Minigowin Foundation
Steven A. and Dolly Minter
George and Amy Mirabal
Douglas E. Mitchell Charitable Remainder Unitrust
William A. and Margaret N. Mitchell
Carol and Clay Mock
James Moore
Tara Moore
Walter and Barbara Moore
Christopher H. Morgan Jr.
Mario and Dana Morino
Christine Morris
Robert S. Morrison Foundation
Cindy Moskal
Mt. Sinai Health Care Foundation
Daniel Mulgrew
Michael Mulgrew
Andrew Mull Family
Beatrice B. Muller
Myrtle I. Muntz
Arthur Murphy
Susan B. Murphy

N

David and Muriel Nachman
National Accreditation Council
National Black MBA Association Cleveland Chapter
Nature Center at Shaker Lakes
Neal Family Trust
NeatStuffCollectibles.com
Beverly A. Nemitz
Nesnadny + Schwartz
Jane and Frederick Neubauer Jr.
William and Catherine White Newkirk
Urban Nilsson
Mary Louise Nixon
Nord Family Foundation
Nordson Corp. Foundation
Paula Norris
Valerie Novacco

PolyOne Corp.
Kathryn and James Porcella
Estate of Frank H. Porter
Robert and Mary Jo Potts
Constantina Poulos
John D. Poulos, Esq.
Edward Povraznik
Kyle Poyar
Precision Environmental Co.
Prepay One
Philip and Karen Price
John and Norine Prim
Principal Financial Group Foundation
Lucy Principe
Ronald and Mary Pristera
Angelo Privitera
Laverne P. Prizner
Progressive Insurance Foundation
Ricardo W. Prude
Aprel L. Prunty
Martin Puin & Associates
Janeen Purcell
Kathie Purmal
Lois A. Puskarich
Mary Puskarich
Matthew and Kris Puskarich
Michael and Judy Puskarich

R

Radiological Service Training Institute
Elizabeth J. Ragg Trust
Diane Raglow
P. Eric and Carol A. Ralston
Antonio Ramos
Beth O. Rankin
Peter and Julie Raskind
Charles A. and Ilana Horowitz Ratner Family Foundation
Mary L. Ray
Reaching Heights/Cleveland Heights-University Heights Public Schools Foundation
Kay Redmond
Helen Ann Reed
Gina Reger
Steven and Sara Reger
Elton and Lenora Reimer
William Reindel, O.D.
David and Patricia Reines
Reminger Foundation Co.
Daniel and I. Jane Reynolds
Craig and Laurie Rhodes
Ronald B. and Bess Rodriguez Richard Rockette L. Richardson
Friends of Beatrice Jourdain Richie* in Lowe, N.Y.
Winston H. Richie, D.D.S.
Robert and Rose Rideout
Almuth E. Riggs
Charles A. Rini

Kevin and Joyce Shaw
Bradley A. Shellito
David and Elizabeth Shellito
Christine Sherwin
Reginald Shiverick
Marjorie B. Shorrock
Patricia M. Sidley
John B. Silvers
Melvin L. Simmons
Jeffrey Simske, Ph.D. and Heather Vallier, M.D.
Jacqueline Sinkford and Doris Mosley
Sisler McFawn Foundation
Sisters of Charity Foundation of Cleveland
Richard and Cynthia Six
Kathy M. Skerritt
Skoda Family Trust
Karen Skunta & Co.
John Slagter
Bonnie J. Slaughter
Smart Business Network
Billie E. Smith
David and Irene Smith
Kempton A. Smith
Kent H. Smith Charitable Trust
Kit Smith
Morton and Gerda Smith
Nancy King Smith
Patti J. Smith
Patrick J. Smock
Dave Snyder and employees of Attevo
Sogg Foundation
Sokol Greater Cleveland
Clara C. Spath
Kathy Speth
Peter Sporn and Barbara Ransby
Springfield Mailers Union #105
Lynn and Manu Sriprajittichai
Susan A. St. John
Kimberly St. John-Stevenson
Elizabeth Starr
Cathy A. Stawarski
Jane A. Steger
Daniel and Carol Stegmaier
David S. Stein Foundation of the Jewish Community Federation of Cleveland
Timothy L. Stephens Jr., M.D.
Jane M. Stevens
Luther and Elaine Stevens
Richard and Megan Stevenson
Robert and Gwen Stewart
Stocker Foundation
Robert and Juanita Storey
Jane S. Strother
Frank and Barbara Sullivan
Michael and Elaine Sullivan
Sustainable Cleveland 2019
Jean M. Sylak
James E. Szabo

Cheryl E. Weinstein Fund of the Fidelity Charitable Gift Fund
Robert P. Weisberger
Fred and Lois Weisman
R. Budd and Janet Werner
Western Reserve Historical Society
Western Reserve Trail Running
Rev. Dr. Louise F. Westfall
Westlake Porter Public Library Foundation
Westlake Reed Leskosky
Margaret Wheeler
Myra G. White
Raymond and Ruth White
James Whiteman
Carmel B. Whiting
Nancy and Marvin Whitman
William W. Widdowson
John S. Wilkins
Mildred Williams
Willoughby South High Sunshine Club
Meghan Wilson
Valencia Wilson
John and Linda Wirtshafter
Linda M. Wise
H. Robert and Hope Wismar
Katherine and Daniel Wolff
Michael and Erika Wolford
David and Barbara Wolfart
Susan Wolpert and Raymond Lesser
Women's Community Foundation
Bernice S. Woodard
Marsha L. Woody
Susan Woolf
William Wray and Darien Woo Torrey
Jackson and Molly Wright

Y

Youngstown Newspaper Guild Local #11
Barbara and Jack Youshak

Z

Michael and Lisa Zehnal
Lynne Zeidler
Cheryl Zelina
Ann E. Zellmer
Ralph and Donna Zende
Ronnie Znidarsic
Kalman Zucker and Mary Haerr

*Deceased

A listing of our donors can be found at www.ClevelandFoundation.org/Gifts



Goff Society

Members of the Goff Society have established a charitable fund or made cumulative gifts of \$10,000 or more.

Anonymous (57)

Linda M. Abraham-Silver, Ed.D.

Cloyd J. Abruzzo Family Fund

Jonathan D. Adams and Pamela T. Conover, M.D.

Stanley I. and Hope S. Adelstein

Joan H. and Richard B. Ainsworth Jr.

Alcoa Foundation

Max D. Amstutz, M.D.

James S. Anderson and David W. Wittkowsky

Albert C. Antoine, Ph.D. and June Sallee Antoine

Keith A. and Marie S. Ashmus

AT&T

Albert A. and Elizabeth Augustus

Fred J. Ball and Elizabeth S. Ball

Mal and Lea Bank

D. Robert* and Kathleen L. Barber, Ph.D.

Kent Cavender Bares, Ph.D. and Jeannine Cavender Bares, Ph.D.

Carolyn and Doug Barr

Mary B. Barrett

Harry F. and Eltha J. Bartels

Hanna H. Bartlett and James T. Bartlett

Katharine C. Bartlett

Sam Bartlett

Joseph A. Bauer, M.D.* and Sally E. Bauer, M.D.

William Beck

William and Mary Beckenbach

James E. Bennett III

Leigh A. Bennett

James and McKey Berkman

Jeff and Sheila Berlin Family Foundation

Leonard and Susan Berson

Jean Astrup Faubel Blanche*

Charles P. and Julia S. Bolton

Jean Bond

Dwight and Susan Bowden

BP America

Brandon Family Foundation

Christopher Brandt, M.D. and Beth Brandt Sersig, M.D.

Grace W. Bregenzler

Bridgestone Invitational/Northern Ohio Golf Charities

Robert R. and Mary K. Broadbent

Jeanette Grasselli Brown and Glenn R. Brown

Marilyn M. Bruneau

Thomas DeSantis

Dietrich Family Foundation

Jill Dixon and Morris Dixon Jr., M.D.

Henry and Mary Doll

Adela D. Dolney

Roland W. Donnem and Sarah Lund

Dunning Family

Susan Lajoie Eagan, Ph.D.

Ginny and Bob Eckardt

Ann C. and Richard L. Ernst

Heather and Jeff Ettinger

Doris A. Evans, M.D.

Betty H. Fairfax

Jean E. Fairfax

Ann Fairhurst

Gene and Marion Faubel

Carol and Nicholas J. Federico Sr.

Lauren Rich Fine

Scott Fine

Fitzgerald Family

Robert J. Fitzsimmons and Margaret A. Collins

Emily Evans Ford

Rebecca Evans Ford

John Gabel

Yolanda and Don Games

Annie Lewis Garda and Robert A. Garda Sr.

Michael and Amy Garvin

Albert I. and Norma C. Geller

Judith Gerson

JoAnn and Robert Glick Family Fund

Ted W. and Nancy L. Goble

Anil B. and Prema A. Gogate

Geoffrey and Helen Greenleaf

Sally and Bob Gries

Grimm Family Foundation

Sally K. Griswold

John, Christiane, Patrick, and Oliver Guinness

William R. Gustaferra

Gustavsson Family Fund

Susan M. Haffey

Rev. Edward T. and Brenda J. Haggins

James J. Hamilton

Ralph W. Hammond

Ambassador Holsey Gates Handyside

Randolph M. Hansen

Patricia Lehtinen and Family

Alan Lerner and Erica New

Cathy and John Lewis

Eleanor M. and Wayne H.* Lewis Jr.

Lincoln Electric Foundation

Betty and Charles M. Lombardy Jr.

Carol and Gilbert Lowenthal, M.D.

Lowery Family Fund

William E. MacDonald III and Susan W. MacDonald

Alex and Carol Machaskee

Linda Macklin

Robert P. and Leatrice B. Madison

Kent A. Majewski and Debra M. Majewski

Ted Mandes and Cynthia Castello

Dan and Janice Margheret

James and Joni Marra

Richard G. and Cynthia C. Marschner

Nancy Clay Marsteller, Ph.D.

Herbert R. Martens

Phyllis M. Martien*

Joel D. Marx Family

Elizabeth B. Mastrangelo, Ph.D.

Ellen L. Mastrangelo

Lisa B. Mastrangelo

Mark E. Mastrangelo

Marianna C. McAfee

Elizabeth McBride

Diane O. McDaniel

Thornton D.* and Penny P. McDonough

Lawrence E. and Sheila Rowan McHale

Patrick and Eileen McIntyre Family Fund

John J. and Doreen A. McLaughlin

Medical Mutual of Ohio

Stanley A. and Barbara S. Meisel

James E. and Cynthia O. Meketa

Don and Terri Milder

Dennis L. Miller

Jamir M. and Racquel A. Miller

Lee A. and Linda P. Miller

Samuel H. and Maria Miller Foundation

A. Grace Lee Mims

Minigowin Foundation

Michael and Anna Marie Minotti

Steven A. and Dolly Minter

William A. and Margaret N. Mitchell

Doris A. Rigglin

William Hughes Roberts

Kathryn Robins and Richard Robins, Ph.D.

Rock and Roll Hall of Fame and Museum Foundation

Elizabeth H. Rose

Scott D. Roulston

Thomas H. and Lois Roulston

Scot M. and Traci L. Rourke

Russell Realtors

Richard H. and Gail Rye

Eliza and John Saada

Saint Luke's Foundation of Cleveland

Linda Burwasser Schneider

Robert and Cynthia Schneider

James A. and Anne Schoff

Rev. Daniel Holt Schoonmaker

Schron Family

Jill Schumacher

Robert H. and Sandra R. Schwartz

Sears-Swetland Family Foundation

Elizabeth Sedgwick

Nancy P. Seitz

Senfor Family Foundation

Ashok and Rajanee Shendure

Clara and John Sherwin Jr.

John and Laura Shields

Reginald and Lynn Shiverick

Terry Shockey, Florence E. Shockey,* and Bud (Lovell) Shockey*

J.B. Silvers and Leah S. Gary

Jeffrey Simske, Ph.D. and Heather Vallier, M.D.

Sisters of Charity Foundation of Cleveland

Ruth J. Skuly and Leo A. Deiningers

Smart Business Network

Robert L. and Anita L. Smialek

Deborah Ann Smith

Russell H. and Gretchen H. Smith

David S. Snapp* and Virginia Roberts Snapp

Sogg Foundation

Frank U. Sowell and Linda A. Jackson Sowell

Edward J. and Elizabeth Starr

Billie Howland Steffee

Brit and Kate Stenson

Matthew and Elizabeth Stewart

Buckingham, Doolittle & Burroughs — Cleveland
 Lenore V. Buford, Ph.D.
 B. Kingsley Buhl
 Lance C. Buhl
 Judge Lillian W. Burke
 Richard and Joyce Burke
 Robert and Virginia Burkhardt
 Calfee, Halter & Griswold
 Margaret C. Callander
 David and Ginger Campopiano
 Arnold and Bonnie Caplan
 Harry and Marjorie M. Carlson
 Kathryn Carlson
 Carney Foundation
 John J. Carney and Tana N. Carney
 E. Bruce* and Virginia Chaney
 Pamela Wallace Chaney
 Kelly Chapman
 Judge Carl J. and Dee Ann Character
 Charter One
 Allison E. Conrad Cherkinian and Michael K. Cherkinian
 Emily J. Cherkinian
 Michael E. Chesler
 Corning Chishalm
 Debra and Seth Chwast
 Anne Clapp
 Michael A. and Susan K. Clegg
 Ruth Clement
 City of Cleveland
 Cleveland Construction
 Cleveland Women's City Club Foundation
 Clutterback Family Foundation
 Ginny and Bob Clutterback
 Communications Workers of America — District 4
 Caroline Conrad
 Robert and Jean Conrad
 Susan Conrad
 Andrea Conrad-Bachman
 William E. and Mary Conway
 Kenneth H. and Blanche P. Cooley
 Ensign and Lana Cowell
 Jack* and Jeanette Crislip
 Tim and Susan Curtiss
 Alexander M. and Sally Cutler
 Manohar L. and Chandra K. Daga
 David J. Darrah
 D.J. Davie
 David G. and Adelaide S. Davies
 Edward J. Davis and Mary Ann Corrigan-Davis
 J. Michael and Amy S. Davis
 John P. and Kathy M. Davis
 Lytle T. and Johnnie B. Davis
 Deaconess Community Foundation
 James M. and Ann M. Delaney

Teri A. Hansen
 William E.* and Nancy M. Harris
 Mary Jane Hartwell and Shattuck Hartwell, M.D.*
 H. Clark Harvey Jr. and Holly Selvaggi
 Donald F. Hastings and Shirley T. Hastings
 Henry R. Hatch and Barbara Hitchcock Hatch*
 Karry and Jonathan Hatch
 Lawrence and Linda Hatch
 Robin Hitchcock Hatch
 William R. and Constance S. Hawke
 Preston B. Heller Jr.
 Beverly G. and Albert M. Higley Jr.
 Anne and Thomas Hilbert
 Michael and Kay Hinderliter
 Debra Hirshberg and Jamie Hecker
 Morley* and Elizabeth N. Hitchcock
 Arlene and Arthur S.* Holden
 Freddie and Ronald D. Holman Sr.
 Sandra Duncan Holmes and Harry L. Holmes
 Michael J. and Jane Horvitz
 Charles and Charlene Hyle
 Jonathan E.* and Katherine Ingersoll
 Margaret A. and R. Livingston Ireland Foundation
 B. Scott Isquick
 Andrew Jackson
 Judge Perry B. Jackson Scholarship Foundation
 Jacobsen/Daniels Associates
 Jerry and Martha Jarrett
 Tigger & Irving Jensen Foundation
 Kevin K. Johnson and Connie Hill-Johnson
 Nancy Kurfess Johnson, M.D.
 Brooks M.* and Anne M. Jones
 Elizabeth W.* and William M. Jones
 JPMorgan Chase Foundation
 Nancy and Donald Junglas, M.D.
 Junior League of Cleveland
 Kaiser Permanente
 Richard E. and Judith S. Karberg
 Donald J. Katt and Maribeth Filipic-Katt
 Paul R. Keen and Denise Horstman
 Keithley Instruments Fund
 R. Eric Kennedy
 John and Karen Kirk
 Malvina and Gilles Klopman, Ph.D.
 Paul S. and Cynthia M. Klug
 Stewart A. and Donna M. Kohl
 Vilma L. Kohn, Ph.D.
 Martin R. Kolb and Sandra Kiely Kolb
 Lakewood Foundation
 Jean A. Lang
 Tom H. and Samie Lang
 Craig H. and Kristi J. Latham
 Susan and James Latham
 Thomas T. Law Foundation
 Benson P. and Vicki P. Lee

Molly Bee Fund
 J. Michael and Diane Monteleone
 Dan T. Moore III
 Lindsay J. and David T. Morgenthaler
 Rev. Dr. Otis Moss Jr. and Edwina Moss
 John P. Murphy Foundation
 Naraine Global Fund
 John G. and Karen R. Nestor
 Jane and Frederick Neubauer Jr.
 Charles J. and Patricia Perry Nock
 Shirley R. Nook
 Nordson Corp. Foundation
 Northwest Emergency Team
 James A. (Dolph)* and Fay-Tyler Norton
 Joe and Arline Nosse
 Ann and Bob O'Brien
 Ohio Savings Bank Charitable Fund
 1-888-Ohio Comp
 Amelia and William M. Osborne Jr.
 Oswald Cos.
 Jane and Jon Outcalt Foundation
 J. Ward Pallotta
 Marjorie K. Pallotta*
 Charles G. Pauli
 James E. and Barbara G. Pearce
 Emily M. Peck
 MacGregor W. Peck
 Gilbert S. Peirce
 Katherine and James Pender
 Stephen and Felicia Perry
 George J. Picha, M.D.
 Pignolet Family
 Richard W. and Patricia R. Pogue
 Point One — Behavioral Healthcare Network
 Anthony Post, M.D. and Marjorie Greenfield, M.D.
 Potocsnak Family
 Precision Environmental Co.
 PricewaterhouseCoopers
 Max R. and Linda J. Proffitt
 Victor A. and Phyllis E. Prak
 Jim Puffenberger
 Radiological Service Training Institute
 P. Eric and Carol A. Ralston
 Clara Rankin
 Victoire and Alfred M. Rankin Jr.
 Peter and Julie Raskind
 Charles A. and Ilana Horowitz Ratner
 Judy and Robert Rawson Jr.
 Todd R. and Mary L. Ray
 F. James* and Rita Rechin
 Donna and James Reid
 David P. and Sandra Reif
 Raymond M. and Mary Louise Reisacher
 Michael and Jeanne Reitz
 Ronald B. and Bess Rodriguez Richard

Lael Stone, M.D.
 George B. Storer Foundation
 James P. Storer
 Robert D. and Juanita C. Storey
 Judith D. and G. Walter Stuelpe Jr.
 Frank and Barbara Sullivan
 Thomas and Sandy Sullivan
 Thomas C. Sullivan Jr.
 Alice and Béla Szigethy
 Frances P. Taft
 Dudley J. Taw
 Mike and Jane Teller
 Third Federal Foundation
 Neil and Kathy Thompson
 Tri Vantage
 John M. and Lori J. Turnbull
 Joseph Tzeng
 Philip R. Uhlin
 Paul* and Sonja Unger
 Robert F. and Beverly M. Vail
 Catherine G. and Dale E. Veres
 Sen. George V. and Janet Voinovich
 Douglas and Holly B. Wang
 Neil R. and Constance B. Waxman
 Cydney Weingart
 Kay Wellman
 William Wendling and Lynne E. Woodman
 Westlake Reed Leskosky
 Margaret and John Wheeler
 Bradley W. Whitehead and Amy Weisberg-Whitehead
 Carmel B. Whiting
 Charles D. Whitmer and Mary G. Whitmer
 Carolyn Wipper
 Thomas M. and Mary H. Wolf
 Susan Wolpert and Raymond Lesser
 Margaret W. Wang
 John and Jacqueline Woods
 Robert J. and Janet G. Yaroma
 John Stanley Zitzner and Margaret Ingersoll Zitzner
 Angelica Zylowski

*Deceased

For more information, please visit www.ClevelandFoundation.org/Goff



Legacy Society

Members of the Legacy Society have planned a future gift to their community through a bequest, trust, pooled income fund, life insurance policy, charitable gift annuity, or charitable remainder trust.

Anonymous (14)

Jonathan D. Adams and Pamela T. Conover, M.D.

Stanley I. and Hope S. Adelstein

Peter and Jane Anagnostos

Lois M. Applegate

Nikki* and Harold Babbitt

Dolores J. and Lawrence J. Badar

Marvelous Ray Baker

Fred J. Ball and Elizabeth S. Ball

Mal and Lea Bank

D. Robert* and Kathleen L. Barber, Ph.D.

Ronald C. Barnes

Hanna H. and James T. Bartlett

Richard and Mary Ellen Batyko

Jean A. Bell*

Leona Bevis*

Dennis and Madeline Block

Caprice H. Bragg

Lois Briggs

Arthur V.N. Brooks

Lenore V. Buford, Ph.D.

Joyce A. Burch

George W.* and Helen Boggis Burd

Robert and Virginia Burkhardt

Anna Ruth Bussian

Carmella Calta

Manny Calta

Tom* and Peggy Campbell

Harry and Marjorie Carlson

Mary C. Carter

Kathleen A. Cerveny

Kelly Chapman

Joseph A. Chmielewski

Michael A. and Susan K. Clegg

Ruth H. Cohn*

Catherine E. and James P. Conway Family Trust

Blanche P. and Kenneth H. Cooley

C. Linda Cooper

Susan and Richard F. Coyne

John Cridland

David B. Crow and Elizabeth L. Crow

Pitt A. and Sally Curtiss

Manohar L. and Chandra Daga

Beth Darmstadter

Philip Dawson

Donna Steen Dettner

Carl F. Doershuk, M.D. and Marian Mars Doershuk

Henry and Mary Doll

John E. Doxsey

Patricia Jansen Doyle*

Ruth A. Dreger

Terri Bradford Eason

Stephen M. Egert

Kevin Ellison

Doris A. Evans, M.D.

Betty H. Fairfax

Jean E. Fairfax

Charles J. Farro

Lauren Rich Fine

Scott Fine

Richard and Susan Fink

Fitzgerald Family

Helen V. Fitzhugh*

Virginia Q. Foley

C. Henry and Caryn Foltz

John Gabel

Joy E. Garapic

Albert I. and Norma C. Geller

Robert M. and Barbara Ginn

Robert and JoAnn Glick

Gerald Lieber Goodman

Joseph T. and Karen A. Gorman

Julianne Goss

Winifred H. Gray

Sally K. Griswold

Michael J. Grusenmeyer, M.D.

Barbara Gustafson

Marie Gustavsson-Monago

Rev. Edward T. Haggins

Mary Louise and Richard Hahn

Alice Hamilton*

Awilda Hamilton

Ambassador Halsey Gates Handyside

Randolph M. Hansen

Terri A. Hansen

Mary Jane and Shattuck* Hartwell

Marcia G. Harvey*

Dorothea Jean Hassler*

Beverly G. and Albert M. Higley Jr.

Edith Fellingner Hirsch

Morley* and Elizabeth N. Hitchcock

Sandra L. Hoefler

Michael J. and Suzanne I. Hoffmann

Ruth R. Holm

Ronald D. Holman Sr.

Samuel J. Horwitz and Eva H. Horwitz

P. Clark Hungerford

Kathleene Huntley

Katherine and Jonathan* Ingersoll

Jerry and Martha Jarrett

Kevin K. Johnson and Connie Hill-Johnson

Elizabeth W.* and William M. Jones

L. Morris Jones, M.D. and Adrienne L. Jones, Ph.D.

Nancy and Donald Junglas, M.D.

Anne C. Juster

Patricia L. Kalbac

Joel and Donna Kaminsky

Willis E. Kelley

William and Barbara Kirsch

Gay C.* and James T. Kitson, Ph.D.

Malvina and Gilles Klopman, Ph.D.

Norman F. and Sandra L. Klopp

August and Olga Koenig

Stewart A. and Donna M. Kohl

Vilma L. Kohn, Ph.D.

Martin R. Kolb and Sandra Kiely Kolb

June R. Kosich

Philip L. and Pauline Krug

Marjorie and Samuel* Lamport

Tom H. and Samie Lang

Charles L. and Josephine Robson Leamy

Eleanor M. and Wayne H.* Lewis Jr.

G. Russell and Connie Lincoln

Kenneth A. Linstruth, M.D.

Charles S. Lurie

Thomas E. and Patricia A. Lusk

Sheldon and Marilyn MacLeod

Joseph J.* and Roseann Manley

Franklin F. Martin

Aline G. Masek

Melodie Mayberry-Stewart, Ph.D.

Susan A. Miller, Ph.D.

Donald L. and Merle C. Milmine

Steven A. and Dolly Minter

William A. and Margaret N. Mitchell

Diane Moffett

Helen M. Moise

John B. Moore

Ann Jones Morgan

Charles E. Morgan

Eloise M. Morgan

Robert D. and Janet E. Neary

John G. and Karen R. Nestor

James A. (Dolph)* and Fay-Tyler Norton

John F. O'Brien

Stanley C. and Elaine C. Pace

Margaret Patch

Taru Patel, M.D. and Mahesh Patel, M.D.

Frederick W. Pattison

Katherine and James Pender

Arvid S. and Marianne B. Peterson

David R. Pierce and Philip M. Cucchiara

Florence K.Z. Pollack

Caroline Brewer Goff Prentiss

William Hughes Roberts

Marjorie A. Rott

James L. Ryhal Jr.

Lynn M. Sargi

Karen Sayre

John C. and Judy Schantz

Megan Schlick and Martha H. Marshall

Robert and Cynthia Schneider

Catherine Swing Sellors

Phyllis and Gerard Seltzer, M.D.

Clara and John Sherwin Jr.

Harry D. Simmons, M.D.

Robert V. and Florence W. Spurney

Cathy A. Stawarski

Billie Howland Steffee

Ralph E. and Barbara N. String

Faith H. and Herbert J.* Swanson

Charles H. Teare

Joseph H. and Ellen B. Thomas

Beverly M. Vail and Robert F. Vail

David and Ellen Van Arsdale

Cynthia Bernheimer Vasu

Mary and Cedomil* Vugrincic, M.D.

William Wendling and Lynne E. Woodman

Richard B. and Janet K. Werner

John A. Wiegman*

Dorothy G. Wigglesworth

Marilyn M. Wilde and Alan H. Wilde, M.D.

Hazel Martin Willacy

George E. and Rolande G. Willis

Genevieve and A. Carter Wilmut

Robert Wismar Jr.

David L.* and Barbara B. Yeomans

Patrick M. Zohn

Malcolm and Helene* Zucker

Angelica Zylowski

Funds

NEW NAMED FUNDS AND PLANNED GIFTS – 2009

Anonymous (4)

Basic Needs for Cleveland Now Fund established by the Cleveland Foundation
Benjamin A. and Jean A. Bell Fund established by Jean Bell charitable gift annuity
Champ Family Faculty Excellence Fund established by Jeannette Brewer Pooled Income Fund
Richard F. Coyne charitable gift annuity #4 established by Richard F. Coyne
Daga Charitable Fund established by Manohar Daga
John E. Doxsey charitable gift annuity #3 established by John E. Doxsey
Harry H. Drysdale Fund established by Harry Drysdale Trust
David Roblin Hawley Memorial Fund established by Frank Hawley Trust
Edith F. Hirsch charitable gift annuity established by Edith F. Hirsch
MetroHealth Trauma Services Support Fund established by Cleveland Clinic Foundation
Minigowin I Fund established by Minigowin Foundation

NEW DONOR-ADVISED FUNDS – 2009

Anonymous (2)

African-American Philanthropy Committee Legacy Fund established by African-American Philanthropy Committee
Vivian Ruth Barnes-Major Family Foundation Fund established by C. Linda Cooper
T. & J. Brown Family Fund established by Tilmon and Jonnie Brown
Richard J. Fasenmyer Donor-Advised Fund established by Richard J. Fasenmyer Foundation
Giving Back Gang Fund established by Henry Doll
Glenwood Fund established by Kevin Johnson and Constance Hill-Johnson
Herbruck Alder Charitable Fund established by Herbruck Alder
Andrew Jackson Fund established by Andrew Jackson
Patricia L. Kalbac Fund established by Patricia L. Kalbac
Keithley Instruments Fund established by Keithley Foundation
Minigowin II Fund established by Minigowin Foundation
Stephen and Felicia Perry Fund established by Stephen and Felicia Perry
Raskind Family Fund established by Peter and Julie Raskind
Beatrice Jourdain Richie Fund established by Winston Richie and Beth Richie
L.A. Silver Fund established by Linda Abraham-Silver
Storey Family Fund established by Robert and Juanita Storey
Whiteman Fund established by James and Cynthia Whiteman

NEW SCHOLARSHIP FUNDS – 2009

Ohio Laborers Future Leaders of America Fund established by James and Cynthia Meketa
Perlman Family Foundation Scholarship Fund established by Gregory Perlman
Terry M. Speth Service Professional Memorial Scholarship Fund established by Tracie M. Speth

NEW ORGANIZATIONAL ENDOWMENT FUNDS – 2009

Adoption Network Cleveland Endowment Fund established by Adoption Network Cleveland
Alpha Omega Foundation Endowment Fund established by Alpha Omega Foundation
Big Ideas Endowment Fund established by Reaching Heights/Cleveland Heights-University Heights Public School Foundation

Blind and Visually Impaired Services Accreditation Fund established by National Accreditation Council
College Club of Cleveland Foundation Fund established by College Club of Cleveland Foundation
Geauga 211 Direct Services Fund established by United Way Services of Geauga County
Phillis Wheatley Association's Emeritus House Preservation Endowment Fund established by Phillis Wheatley Association of Cleveland
Polish-American Cultural Center Fund established by Polish-American Cultural Center
Western Reserve Historical Society Endowment Fund established by Western Reserve Historical Society
Westlake Porter Public Library Endowment Fund established by Westlake Porter Library Foundation

SUPPORTING ORGANIZATIONS AND COMMITTEE-ADVISED FUNDS AS OF DECEMBER 31, 2010

City of Cleveland's Cable Television Minority Arts and Education Fund

Directors: Kathy Allen, Robert E. Eckardt, Michael J. Hoffmann, Steven A. Minter, Mia L. Moore, Yvonne Pointer, Terrell Pruitt, Martin J. Sweeney, Hilary S. Taylor, Esq.

Alton F. and Carrie S. Davis Fund

Directors: Marjorie M. Carlson, Mary Jane Davis Hartwell, Samuel Hartwell, Adrienne L. Jones, Ph.D., Harvey G. Oppmann

Fenn Educational Fund Advisory Committee

Directors: Timothy Brimus, Jo Ann Charleston, M. Judith Crocker, Duane Crockrom, Ronald V. Johnson Jr., Ramona Lowery, David Mikita, Craig Peer, Carol Rivchun, Steven Sims, Karen Thompson, John Zitzner

Higley Fund

Directors: James M. Delaney, Bruce G. Higley, Michael J. Hoffmann, Janet E. Neary, Sharon Higley Watts

Medical Mutual of Ohio Charitable Foundation

Directors: Ruth Anna Carlson, Inajo Davis Chappell, Esq., Sharon Sobol Jordan, John T. McBride, M.D., Susan M. Tyler

Sherwick Fund

Directors: Stephanie McHenry, Randell McShephard, Christopher Ronayne, Heather Sherwin, John Sherwin Jr.

Billie Howland Steffee Family Fund

Directors: Susan W. Cargile, Susan Lajoie Eagan, Ph.D., Steven A. Minter, Jon H. Outcalt, Billie Howland Steffee

Sullivan Scholars Foundation

Directors: Sister Maureen Doyle, Bracy E. Lewis, James Malone, Karen D. Melton, Frank Sullivan, Sandra S. Sullivan, T. Sean Sullivan, Lorraine Vega

Thatcher Fund

Directors: Lisa Manning, Randy M. Thatcher

Time Warner Cable/Cleveland City Council Neighborhood Technology Fund Advisory Committee

Directors: Tish Biggs, Ph.D., Bill Jasso, Steven A. Minter, Terrell Pruitt, Martin J. Sweeney, Jay Westbrook

Treu-Mart Fund

A supporting organization of both the Cleveland Foundation and the Jewish Community Federation of Cleveland

Directors: Henry J. Goodman, Mary Louise Hahn, Susan Hollingsworth, Steven A. Minter, Amy M. Morgenstern, Albert B. Ratner, Arthur W. Treuhaft

Financial Summary

2009 and 2010 began the road to recovery after the dramatic downturn in the economy and the financial markets in late 2007 and into 2008.

The S&P 500 index was up 26.47 percent in 2009, while the Barclay's Aggregate index of fixed income generated a return of 5.93 percent. The markets recouped some of the losses endured between October 2007 and the end of 2008, when the S&P 500 fell by 41.7 percent.

Like the broader markets, the Cleveland Foundation's investment portfolio regained some, but not all, of its lost value. During 2009, the foundation's composite return was 21.95 percent. That outperformed the 18.36 percent median composite return among institutional investors. It also outpaced a blended portfolio of 70 percent equities and 30 percent fixed income, which would have returned 20.31 percent.

Our assets increased in 2009 from \$1.6 billion to \$1.8 billion, primarily as a result of investment earnings of \$275.4 million and contributions of \$36.3 million, offset by \$95.7 million of grants and expenses. Despite the economic decline, the board authorized grants of \$79 million in 2009. We also continue to focus on minimizing our administrative expenses, which totaled 0.7 percent of average assets for the year.

2010, AS OF SEPT. 30

Financial markets remained quite volatile during the first three quarters of 2010: a first-quarter rally, a second-quarter downturn, and another surge in the third quarter. Overall, through Sept. 30, the S&P 500 index rose 3.89 percent, and the Barclay's Aggregate index was up 7.95 percent.

The Cleveland Foundation's investment portfolio performed very well during this period of volatility. For the first three quarters, the foundation's composite return was 6.2 percent, about even with the median institutional-investment composite return of 6.14 percent. Our assets at Sept. 30 remained at \$1.8 billion, as grants and expenses offset year-to-date investment earnings and contributions.

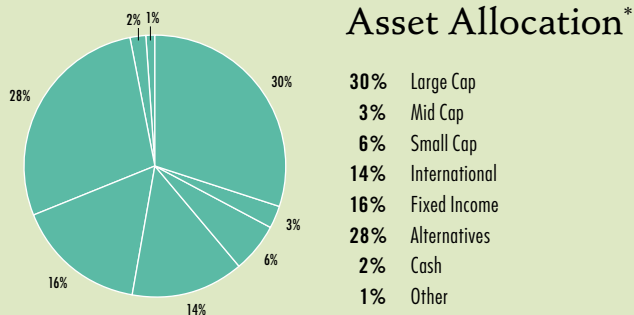
We continue to diversify our portfolio under the oversight of our Investment Committee. We believe a well-diversified portfolio, managed by quality asset managers and trust banks, is the best way to navigate through continuing market turbulence.

In closing, I'd like to recognize J.T. Mullen, who retired as chief financial officer of the Cleveland Foundation in 2010 after 23 years of service. I am very proud to have joined the foundation team as CFO, and am happy to be back in my hometown after living away for more than 30 years. I am committed to continuing the strong financial performance and strong internal controls that you have come to expect from the Cleveland Foundation.

Kate A. Asbeck

Kate A. Asbeck

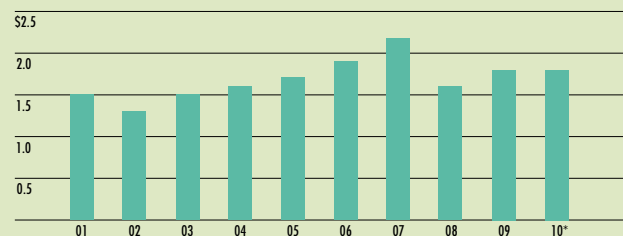
SENIOR VICE PRESIDENT AND CHIEF FINANCIAL OFFICER



* As of Sept. 30, 2010, unaudited

Total Assets 2001-2010

(dollars in **billions**)



External Advisors and Banks

African-American Philanthropy Committee

Teresa Metcalf Beasley, Esq.
Charles Burkett Jr.
Donald Graham
Vivian Hairston
Constance Hill-Johnson
Justin Horton
Ndeda Letson
Franklin F. Martin
Tracy Oliver

African-American Philanthropy Summit Committee

Mylayna Albright
Jackie Chisholm, Ph.D.
Donna Dabbs
Eleanore Dees
Arlene Ford
Vallery Gaines
Tanya Howard Grace
Kathryn Hall
Raland Hatchett
Jeanette Haynes-Gordon
Charlene Higginbotham
Elizabeth Hilton
Kevin Johnson
Ronald V. Johnson Jr.
Mittie Davis Jones, Ph.D.
Me'Lani Joseph
Bracy Lewis
Gabrielle Love
Jimmy Malone
Stanley Miller
Chyrel Oates
Hazel Parker
Raseem Parker
Sonya Pryor-Jones
Rocky Richardson
Denise Rucker-Burton
Andradia Scovil
Joyce Shaw
Shenise Thomas
Belva Denmark Tibbs
Alton Tinker
Eric Tolbert
Gloria Ware
Cassandra Collier Williams

Danny Williams
Robin Williams
Raneshia Wilson

Audit Committee

James M. Delaney

Bank Trustees Committee

Paul Clark, Northern Ohio PNC Bank
Timothy Lathe, KeyBank
James M. Malz, JPMorgan Chase
Sean Richardson, FirstMerit Bank
Daniel P. Walsh, Huntington National Bank

Investment Committee

David R. Boles
John Sherwin Jr.
Robert C. Smith

Lake-Geauga Advisory Committee

Dennis E. Eckart
Nancy Guthrie
Bert Holt
John D. Leech
Raphael J. Omerza, Esq.
Todd R. Ray
Daniel D. Smith

Philanthropy and Communications Committee

Larry Benders
David Geyer
Karen Haefling
Frank Harding
Jane Lisy
Maria Quinn, Esq.
Marcia Wexberg, Esq.
Jacqueline Woods

Scholarship Selection and Advisory Committee

Deborah Daberko
Santiago Feliciano Jr.
Lisa Hunt
Karen Kopp
Mary Lynne McGovern
Natividad Pagan
Honorable Michael J. Ryan
Christopher Sedlock

Pamela Smith
Ryan Temple
Margaret W. Wong
William Woods, Ph.D.
David Yen
Zulma Zabala

Investment Options

Choosing the investment option for philanthropic funds for growth is just as important as the decision to entrust the Cleveland Foundation with overseeing and distributing those funds. The foundation provides donors with a variety of investment options and strategies to choose from for the fund they establish, allowing them to select the one that will help them meet their philanthropic objectives.

Banks

BNY/Mellon Private Trust Co.
30195 Chagrin Blvd.
Suite 350W
Cleveland, Ohio 44124

FirstMerit Bank
101 W. Prospect Ave.
Suite 350
Cleveland, Ohio 44115

Huntington National Bank
917 Euclid Ave.
Cleveland, Ohio 44115

JPMorgan Chase Bank
1300 E. Ninth St.
Suite 1300
Cleveland, Ohio 44114

Key Bank
127 Public Square
16th Floor
Cleveland, Ohio 44114

Northern Trust Bank
127 Public Square
Suite 5150
Cleveland, Ohio 44114

PNC Bank
1900 E. Ninth St.
Cleveland, Ohio 44114

U.S. Bank
1350 Euclid Ave.
Suite 1100
Cleveland, Ohio 44115

Investment Management Firms

Carnegie Capital Management Co.
1228 Euclid Ave.
Suite 1100
Cleveland, Ohio 44115

Fairport Asset Management
3636 Euclid Ave.
Suite 3000
Cleveland, Ohio 44115

Glenmede Trust Co.
One Corporate Exchange
25825 Science Park Dr.
Suite 110
Beachwood, Ohio 44122

Gries Financial
1801 E. Ninth St.
Suite 1600
Cleveland, Ohio 44114

Karpus Investment Management
183 Sully's Trail
Pittsford, N.Y. 14534

Union Heritage
211 W. Fort St.
Suite 615
Detroit, Mich. 48226

Individual Advisors

BDS Financial Services
Cedar Brook Financial
Ferris Baker Watts
Goldman Sachs
Merrill Lynch
Private Trust Co.
Robert W. Baird & Co.
Wachovia Securities

Indexed Mutual Funds

The Vanguard Group

TCF Pool

AS OF DECEMBER 31, 2010



Board of Directors

Brief biographies of the Cleveland Foundation Board of Directors can be found at www.ClevelandFoundation.org/Board



**David Goldberg,
Chairman**

PRINCIPAL, EDGERTON
INVESTMENTS

Appointed 2002 by the
board of directors



**Frank C. Sullivan,
Vice Chairman**

CHAIRMAN AND CEO,
RPM INTERNATIONAL

Appointed 2004 by the
Bank Trustees Committee



Charles P. Bolton

PARTNER AND
CHAIRMAN, BRITTANY
STAMPING

Appointed 2004 by the
chief judge, U.S. District
Court, Northern District
of Ohio



Tana N. Carney

CIVIC VOLUNTEER

Appointed 2001 by the
presiding judge,
Cuyahoga County
Probate Court



Inajo Davis Chappell

PARTNER, ULMER &
BERNE

Appointed 2010 by the
board of directors



Paul J. Dolan

PRESIDENT,
CLEVELAND INDIANS

Appointed 2008 by the
Bank Trustees Committee



Joseph P. Keithley

FORMER CHAIRMAN,
PRESIDENT AND CEO,
KEITHLEY INSTRUMENTS

Appointed 2002 by the
board of directors



Frederick R. Nance

REGIONAL MANAGING
PARTNER, SQUIRE,
SANDERS & DEMPSEY

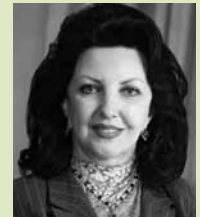
Appointed 2005 by the
Bank Trustees Committee



Sandra Pianalto

PRESIDENT AND CEO,
FEDERAL RESERVE BANK
OF CLEVELAND

Appointed 2004 by the
board of directors



Maria Jose Pujana, M.D.

CLINICAL NEUROLOGIST
AND NEUROPHYSIOLOGIST;
ADJUNCT INSTRUCTOR,
CASE WESTERN RESERVE
UNIVERSITY SCHOOL OF
MEDICINE

Appointed 2002 by the
Bank Trustees Committee



James A. Ratner

EXECUTIVE VICE
PRESIDENT, FOREST CITY
ENTERPRISES

Appointed 2006 by the
administrative judge,
8th Ohio District Court
of Appeals



Alayne L. Reitman

CIVIC VOLUNTEER

Appointed 2002 by the
board of directors



The Rev. Dr. Stephen Rowan

SENIOR PASTOR, BETHANY
BAPTIST CHURCH

Appointed 2009 by the
Bank Trustees Committee



The Rev. Hilton O. Smith

SENIOR VICE PRESIDENT,
TURNER CONSTRUCTION

Appointed 2006 by the
mayor of Cleveland



Ratanjit S. Sondhe

FOUNDER AND CEO,
DISCOVERHELP

Appointed 2008 by the
Center for Community
Solutions

Staff

CLEVELAND FOUNDATION

Executive Office

Ronald B. Richard ^{1,2}
PRESIDENT & CEO

Ani Bagdasarian
PRESIDENTIAL LIAISON FOR
SPECIAL INITIATIVES

Jennifer A. Teeter
EXECUTIVE ASSISTANT

Program, Grants Management, and Records

Robert E. Eckardt ^{1,2}
EXECUTIVE VICE PRESIDENT

Lisa L. Bottoms
PROGRAM DIRECTOR FOR HUMAN
SERVICES AND CHILD AND YOUTH
DEVELOPMENT

Shilpa Kedar
PROGRAM DIRECTOR FOR
ECONOMIC DEVELOPMENT

Lillian A. Kuri
PROGRAM DIRECTOR FOR
ARCHITECTURE, URBAN DESIGN
AND SUSTAINABLE DEVELOPMENT

India Pierce Lee
PROGRAM DIRECTOR FOR
NEIGHBORHOODS, HOUSING
AND COMMUNITY DEVELOPMENT

Helen W. Williams
PROGRAM DIRECTOR FOR
EDUCATION

Kathleen A. Cerveny
DIRECTOR OF EVALUATION AND
INSTITUTIONAL LEARNING

Richard T. Stuebi
FELLOW FOR ENERGY AND
ENVIRONMENTAL ADVANCEMENT

Kathleen A. Hallissey
DIRECTOR OF COMMUNITY
RESPONSIVE GRANTMAKING

Nelson Beckford
PROGRAM OFFICER

Kevin L. McDaniel
PROGRAM OFFICER

Jill M. Paulsen
PROGRAM OFFICER

Paul Putman
PROGRAM OFFICER

Diane C. Kaszei
GRANTS MANAGER

Janice M. Cutright
RECORDS AND KNOWLEDGE
MANAGER

Margaret McGrath Armour
PROGRAM ASSOCIATE

Annabel P. Bryan
PROGRAM ASSISTANT

Rennae M. Coe
PROGRAM ASSISTANT

Mary Clare Donnelly
PROGRAM ASSISTANT

Ciba Jones
PROGRAM ASSISTANT

Sarah L. King
PROGRAM ASSISTANT

Harold J. Garling Jr.
PROJECT ACCESS ASSISTANT

Charlotte J. Morosko
GRANTS ADMINISTRATOR

Karen Bartrum-Jansen
GRANTS ASSISTANT

Denise G. Ulloa
GRANTS ASSISTANT

Patty A. Takacs
RECORDS TECHNICIAN

Joyce R. Wilson
RECORDS TECHNICIAN

Gift Planning and Donor Relations

Caprice H. Bragg ^{1,2}
SENIOR VICE PRESIDENT FOR GIFT
PLANNING AND DONOR
RELATIONS

Terri Eason
DIRECTOR OF GIFT PLANNING

Ginger Mlakar
DIRECTOR OF DONOR RELATIONS

Ann Fairhurst
LAKE-GEAUGA OFFICER

Marie L. Monago
GIFT PLANNING OFFICER

Judy Salm
DONOR RELATIONS OFFICER

Karen M. Sayre
DONOR RELATIONS OFFICER

Marvelous R. Baker
SCHOLARSHIP OFFICER

Jennifer R. Rudolph
GIFT PLANNING ASSOCIATE

Donna C. Johnson
OPERATIONS ADMINISTRATOR

Linda F. Gersten
GIFT PLANNING ASSISTANT

Michelle Blackford
DONOR RELATIONS ASSISTANT

Shari Pachinger
LAKE-GEAUGA ASSISTANT

Maureen F. Forrest
SCHOLARSHIP ASSISTANT

Finance

Kate Asbeck ^{1,2}
SENIOR VICE PRESIDENT AND
CHIEF FINANCIAL OFFICER

Kathy S. Parker
CONTROLLER

Linda Fousek
FINANCIAL ANALYST

Mary J. Clink
ASSISTANT CONTROLLER

Tammi Amata
ACCOUNTING MANAGER

Dorothy M. Highsmith
SENIOR ACCOUNTANT

Judith A. Corey
FUND ACCOUNTANT

Christine M. Lawson
FINANCE ASSOCIATE

Carmela Beltrante
FINANCIAL ASSISTANT

Public Affairs

Cynthia V. Schulz ^{1,2}
DIRECTOR OF PUBLIC AFFAIRS
AND STRATEGY

Jennifer A. Cimperman
PUBLIC RELATIONS OFFICER

Scott P. Tennant
PUBLIC RELATIONS OFFICER

James R. Nichols
SENIOR COMMUNICATIONS
EDITOR

Debra A. Thornsberry
PUBLIC AFFAIRS ASSISTANT

Human Resources

Kathleen L. Stecky ²
DIRECTOR OF HUMAN RESOURCES

Monica K. Brown
HUMAN RESOURCES MANAGER

Danielle Hanna
HUMAN RESOURCES GENERALIST

Governance and Administration

Leslie A. Dunford ^{1,2}
VICE PRESIDENT FOR CORPORATE
GOVERNANCE AND
ADMINISTRATION

Janet M. Carpenter
ADMINISTRATIVE SERVICES
MANAGER

Pamela F. Jaffe
ASSISTANT CORPORATE
SECRETARY

Laura Lash
ADMINISTRATIVE SERVICES
ASSISTANT

Gail Stachnik
RECEPTIONIST

Information Systems

James T. Bickel ²
DIRECTOR OF TECHNOLOGY

Jamie A. McGuire
PROGRAMMER/ANALYST

SUITE 1300

Suite 1300 Services is an affiliate of the
Cleveland Foundation that provides support services
to emerging nonprofits.

Leslie A. Dunford
EXECUTIVE DIRECTOR

Civic Innovation Lab

Andradia Scovil
PROGRAM COORDINATOR

Neighborhood Connections

Thomas E. O'Brien
PROGRAM DIRECTOR

Cynthia A. Lewis
PROGRAM ASSISTANT

Suite 1300 Board of Directors

James V. Patton, Chair
Leslie A. Dunford

Ann C. Lutz
Quentin L. McCorvey Sr.

Brian Vulpitta

AS OF DECEMBER 31, 2010

¹ Officer

² Management Committee

FOUNDATION

ATTORNEY



1422 Euclid Avenue
Suite 1300
Cleveland, Ohio 44115

216.861.3810
www.ClevelandFoundation.org